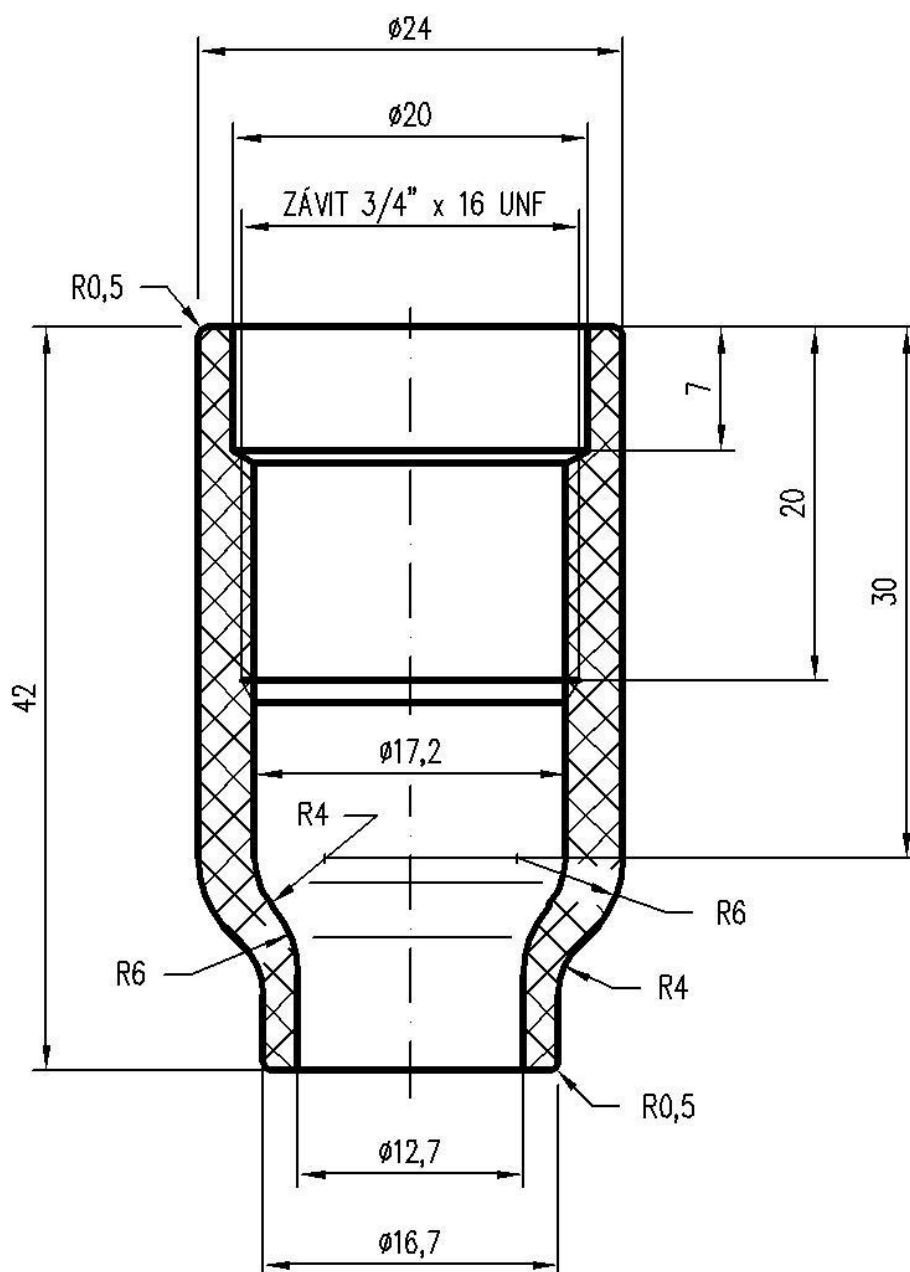


54N14

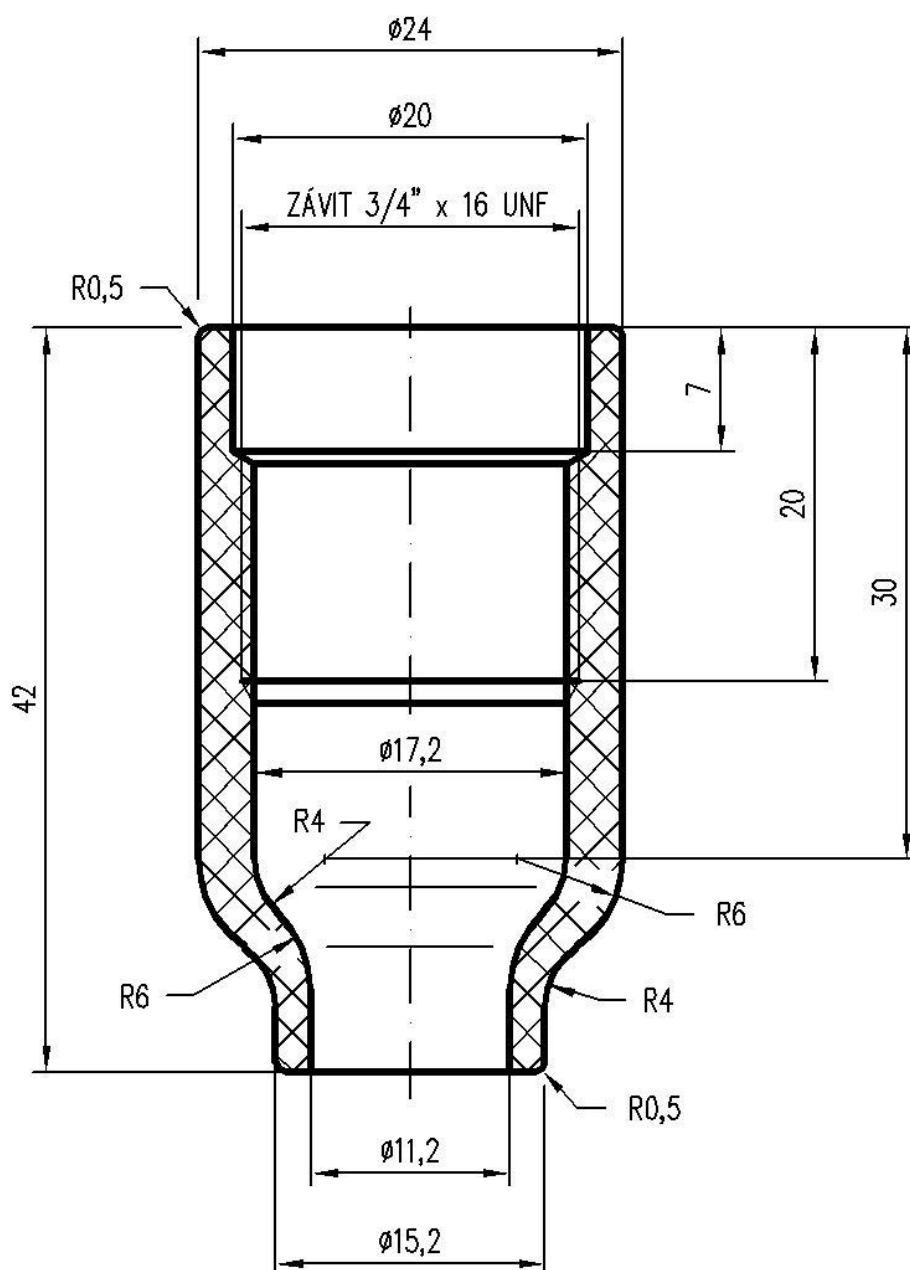


POVOLENÉ VADY:

1. NEVYTAVENÉ NEINTENZIVNÍ SKVRNY
2. POŠKOZENÍ JEDNOHO ZÁVITU Z 1/3 MAX.



54N15

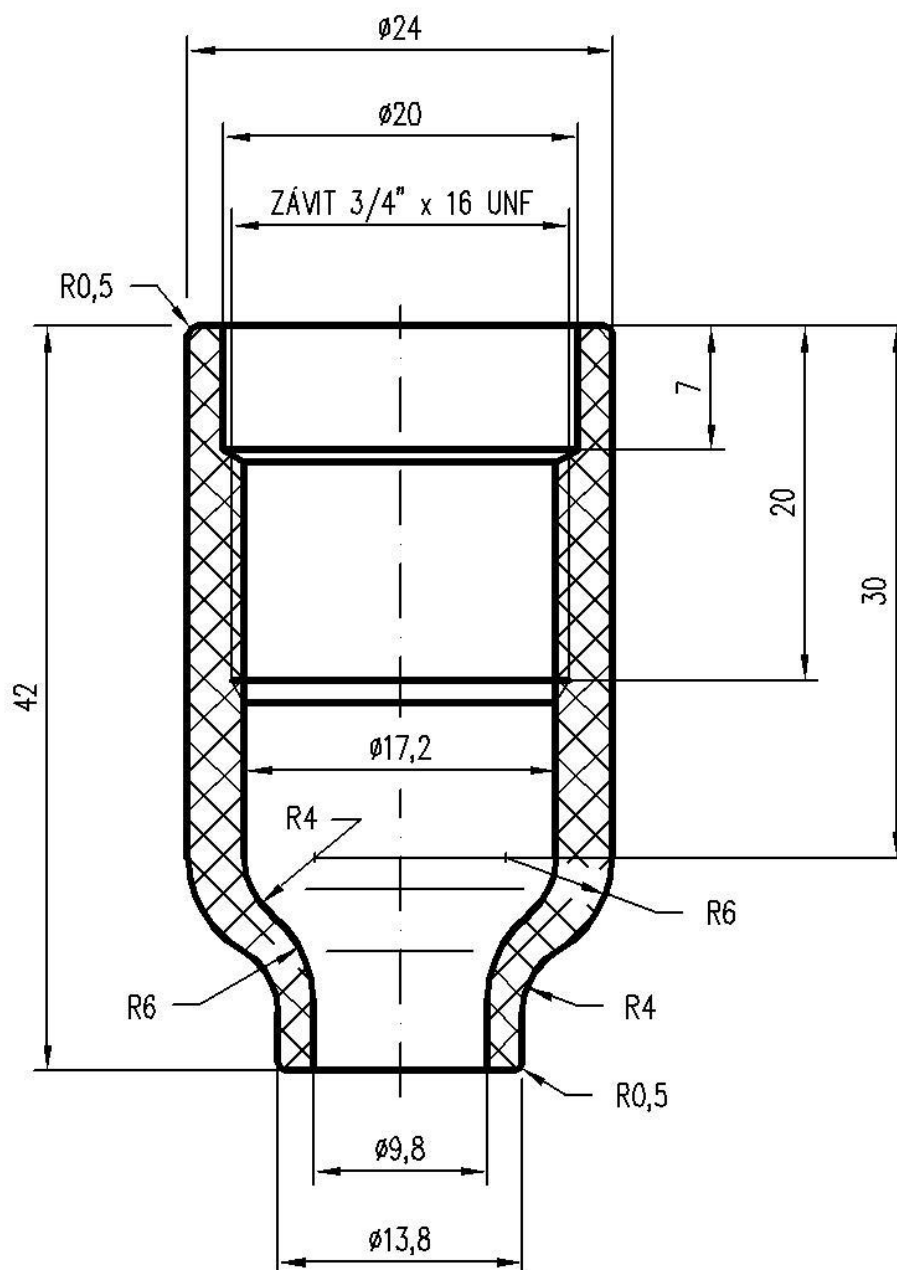


POVOLENÉ VADY:

1. NEVYTAVENÉ NEINTENZIVNÍ SKVRNY
2. POŠKOZENÍ JEDNOHO ZÁVITU Z 1/3 MAX.



54N16

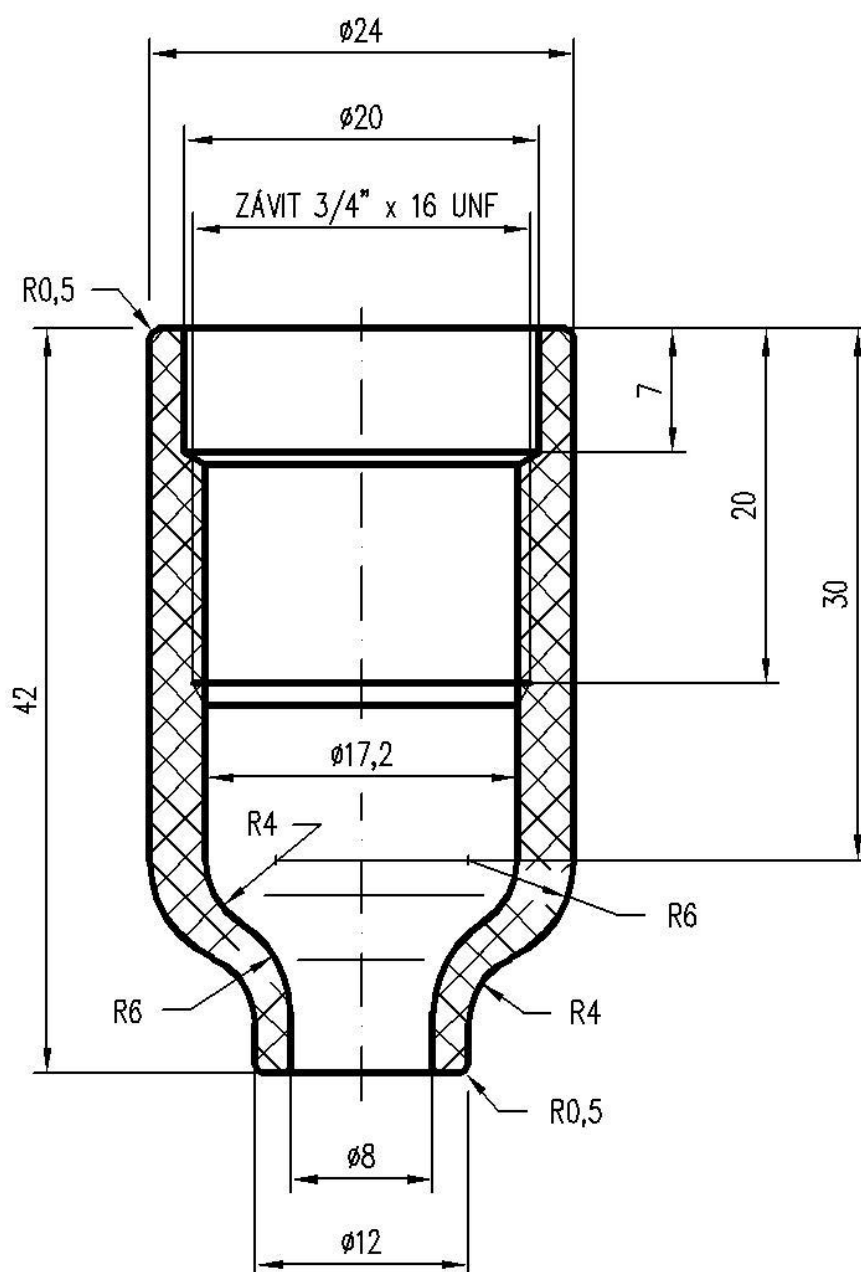


POVOLENÉ VADY:

1. NEVYTAVENÉ NEINTENZIVNÍ SKVRNY
2. POŠKOZENÍ JEDNOHO ZÁVITU Z 1/3 MAX.



54N17

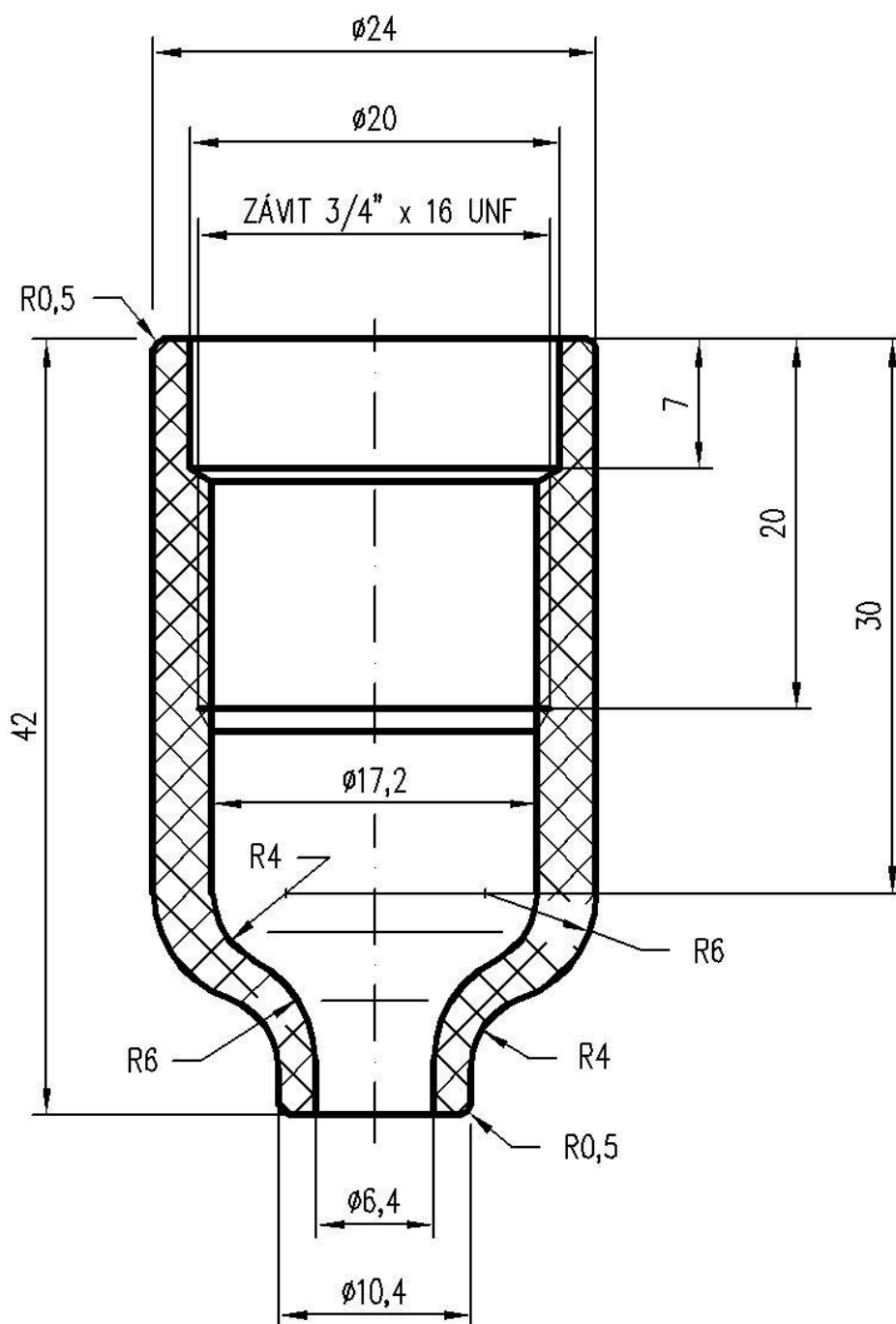


POVOLENÉ VADY:

1. NEVYTAVENÉ NEINTENZIVNÍ SKVRNY
2. POŠKOZENÍ JEDNOHO ZÁVITU Z 1/3 MAX.



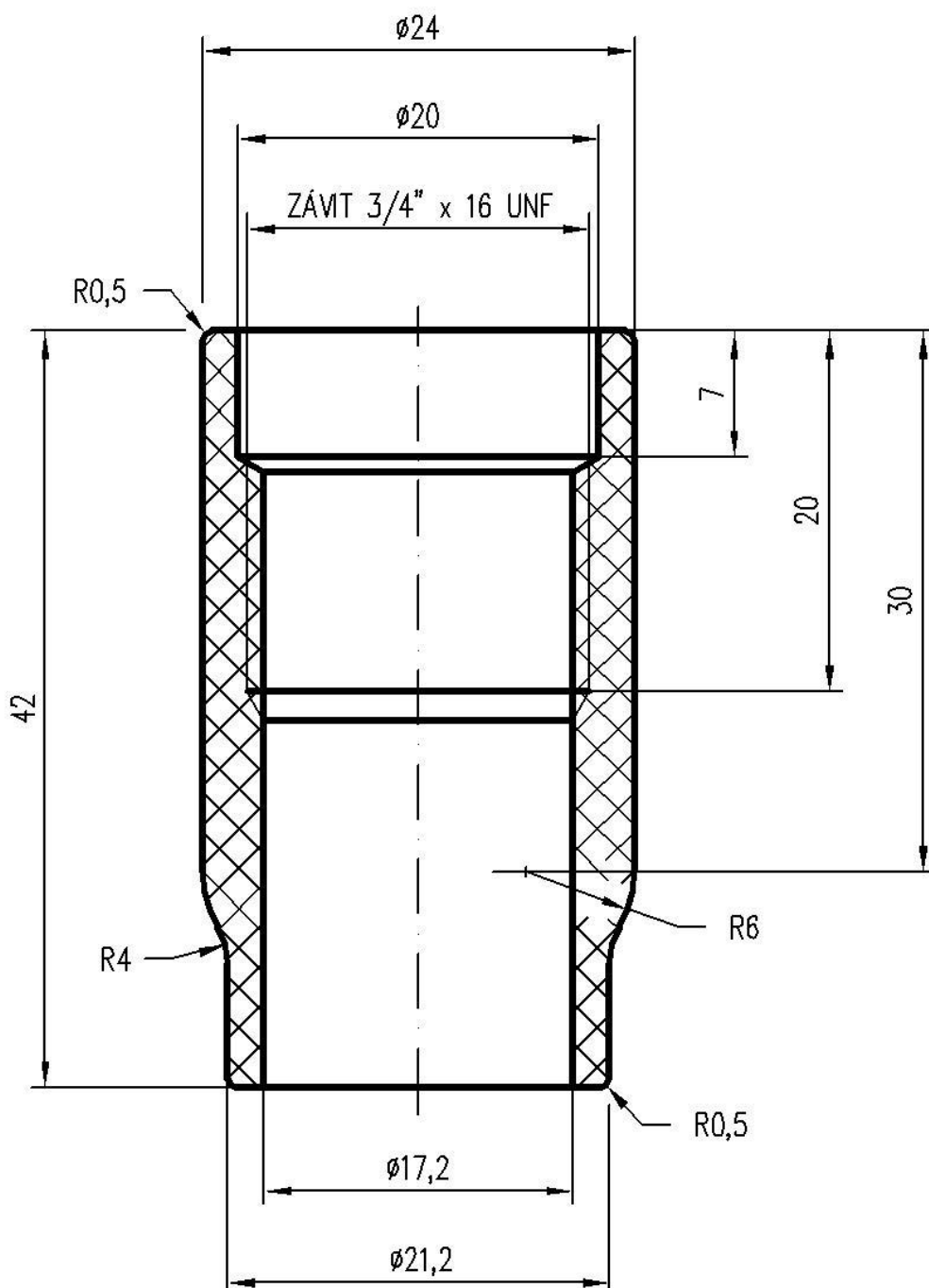
54N18



POVOLENÉ VADY:

1. NEVYTAVENÉ NEINTENZIVNÍ SKVRNY
2. POŠKOZENÍ JEDNOHO ZÁVITU Z 1/3 MAX.

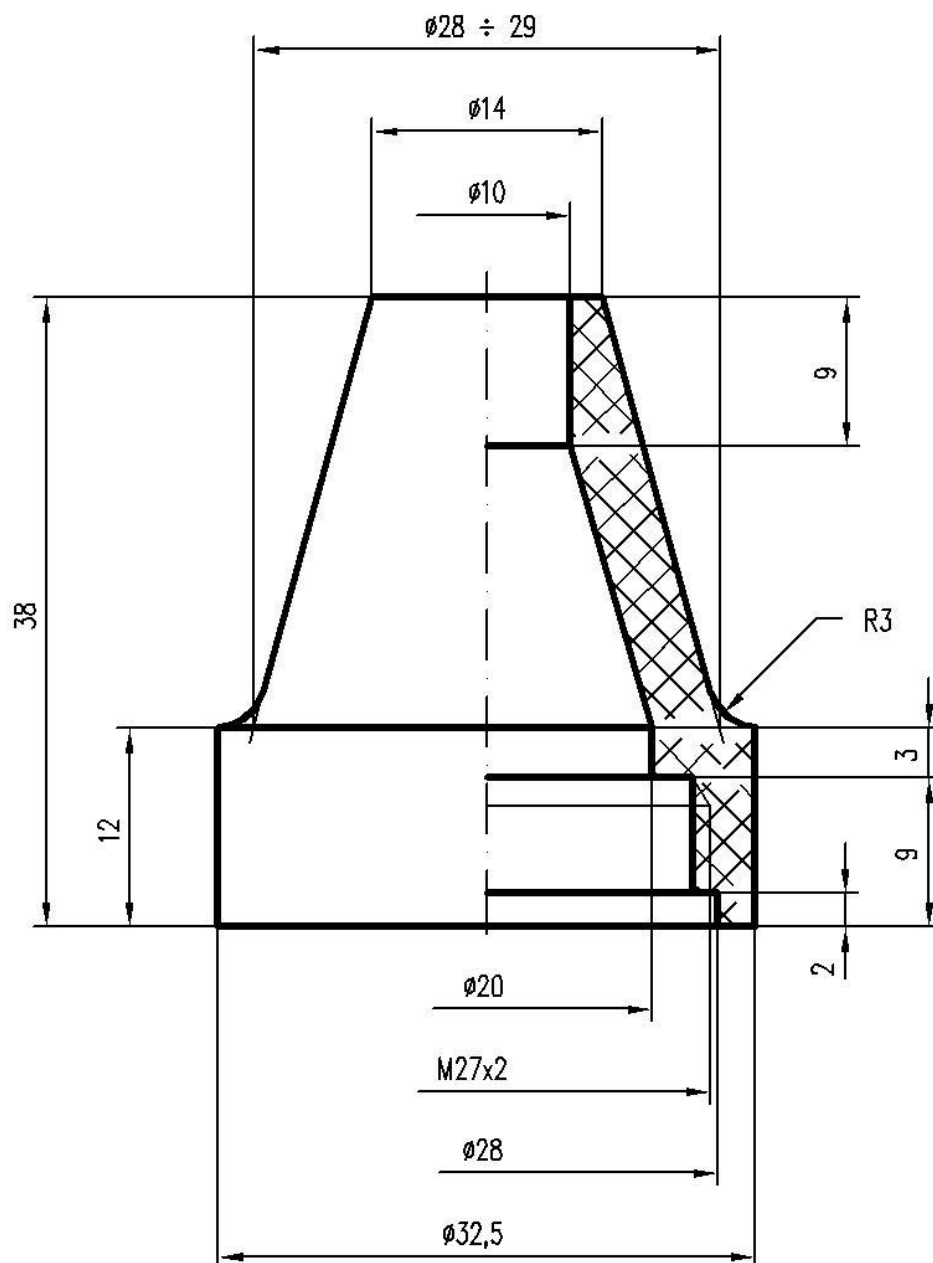
54N19



POVOLENÉ VADY:

1. NEVYTAVENÉ NEINTENZIVNÍ SKVRNY
2. POŠKOZENÍ JEDNOHO ZÁVITU Z 1/3 MAX.

63.10

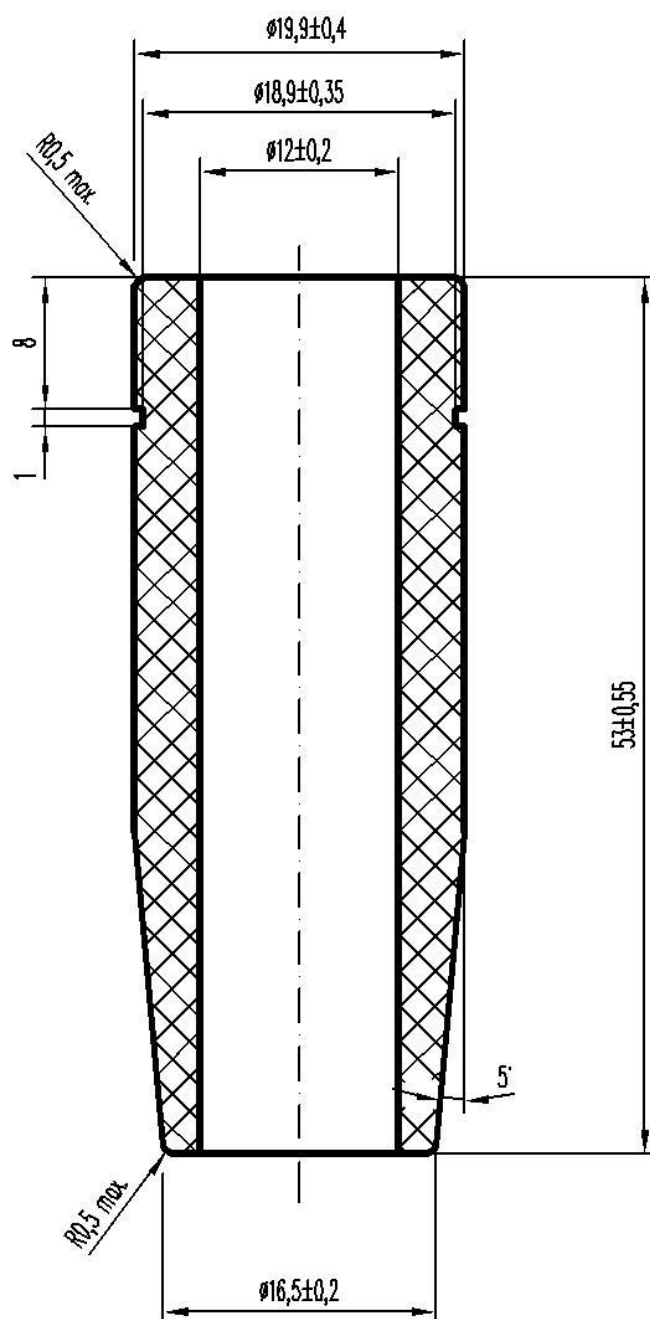


NA VÝROBKU JSOU POVOLENY TYTO VADY:

1. MAX 3 MÍRNĚ VYBARVENÉ SKVRNY Fe DO 2mm
2. STRŽENÍ PROFILU ZÁVITU V DÉLCE 5mm MAX



63.38

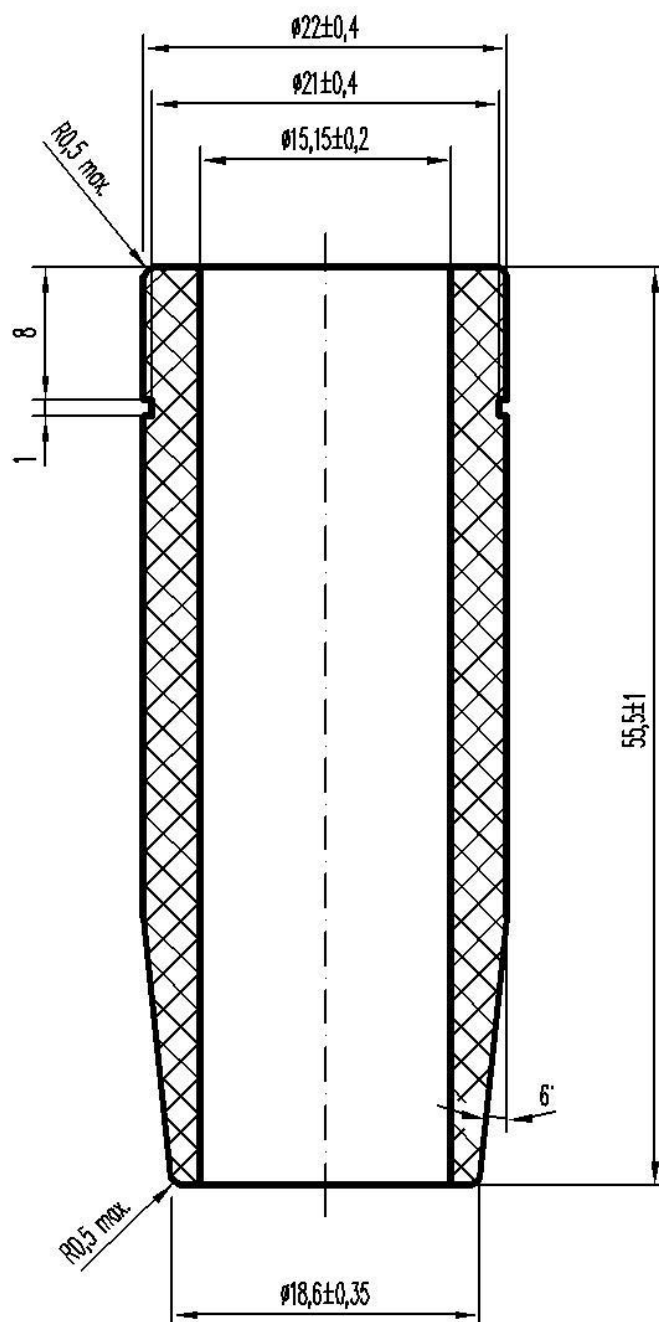


NA VÝROBKU JSOU PŘÍPUSTNÉ TYTO VADY:

1. JEMNÉ KRUHOVÉ RÝHY DO 0,3 mm MAX.
2. JEMNÁ SPIRÁLOVÁ RÝHA NA ČELECH VÝROBKU.
3. NEVYTAVENÁ SKVRNA Fe DO MAX. PLOCHY 2 mm²
4. VYDROLENINY A DŮLKY O MAX. PLOŠE 2 mm²



63.39

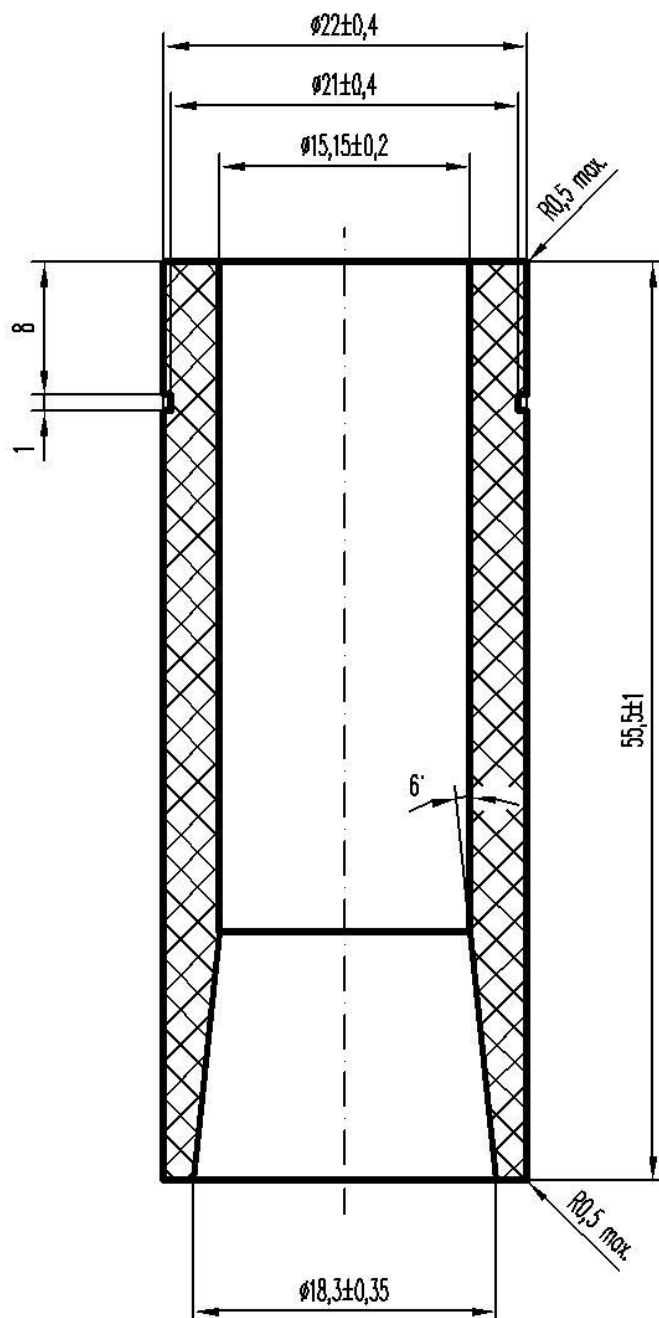


NA VÝROBKU JSOU PŘÍPUSTNÉ TYTO VADY:

1. JEMNÉ KRUHOVÉ RÝHY DO 0,3 mm MAX.
2. JEMNÁ SPIRÁLOVÁ RÝHA NA ČELECH VÝROBKU.
3. NEVYTAVENÁ SKVRNA Fe DO MAX. PLOCHY 2 mm^2
4. VYDROLENINY A DŮLKY O MAX. PLOŠE 2 mm^2



63.40

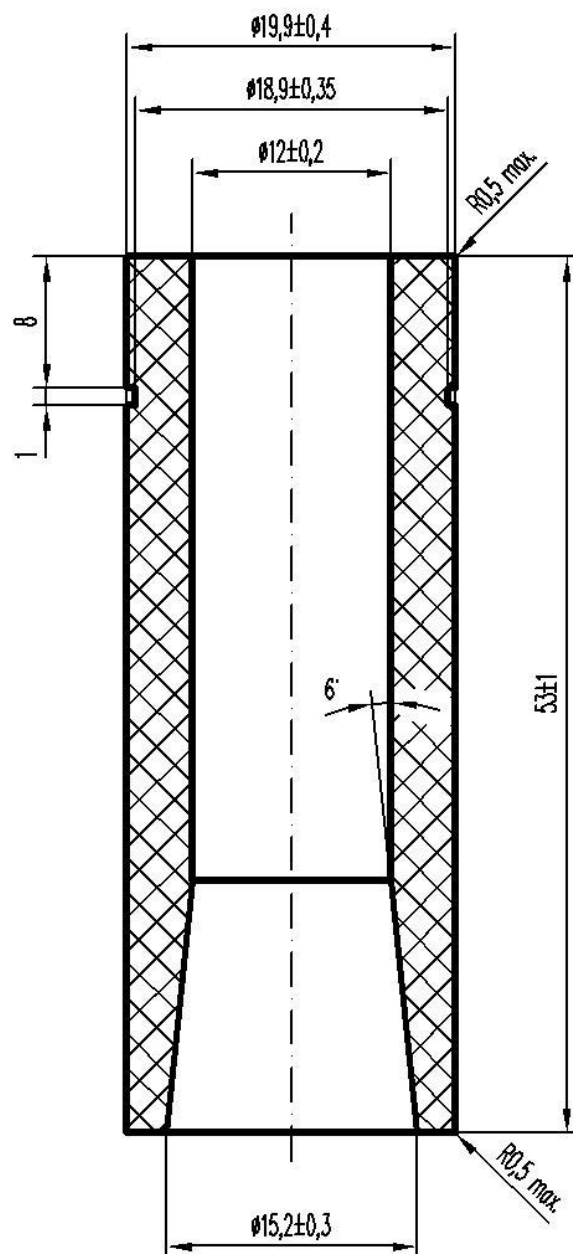


NA VÝROBKU JSOU PŘÍPUSTNÉ TYTO VADY:

1. JEMNÉ KRUHOVÉ RÝHY DO 0,3 mm MAX.
2. JEMNÁ SPIRÁLOVÁ RÝHA NA ČELECH VÝROBKU.
3. NEVYTAVENÁ SKVRNA Fe DO MAX. PLOCHY 2 mm^2
4. VYDROLENINY A DŮLKY O MAX. PLOŠE 2 mm^2



63.41



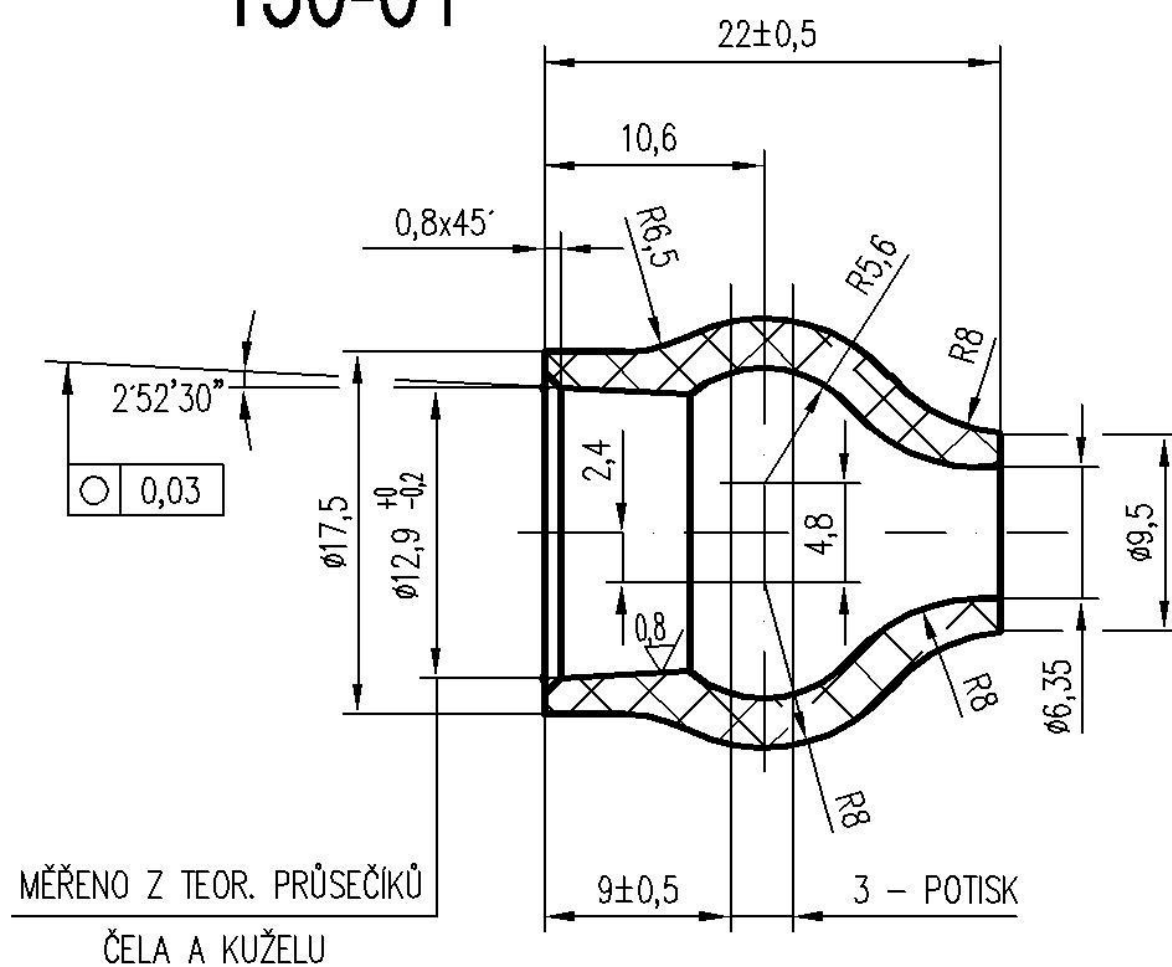
NA VÝROBKU JSOU PŘÍPUSTNÉ TYTO VADY:

1. JEMNÉ KRUHOVÉ RÝHY DO 0,3 mm MAX.
2. JEMNÁ SPIRÁLOVÁ RÝHA NA ČELECH VÝROBKU.
3. NEVYTAVENÁ SKVRNA Fe DO MAX. PLOCHY 2 mm²
4. VYDROLENINY A DŮLKY 0 MAX. PLOŠE 2 mm²

www.BRISK.EU
BRISK®
CZECH REPUBLIC

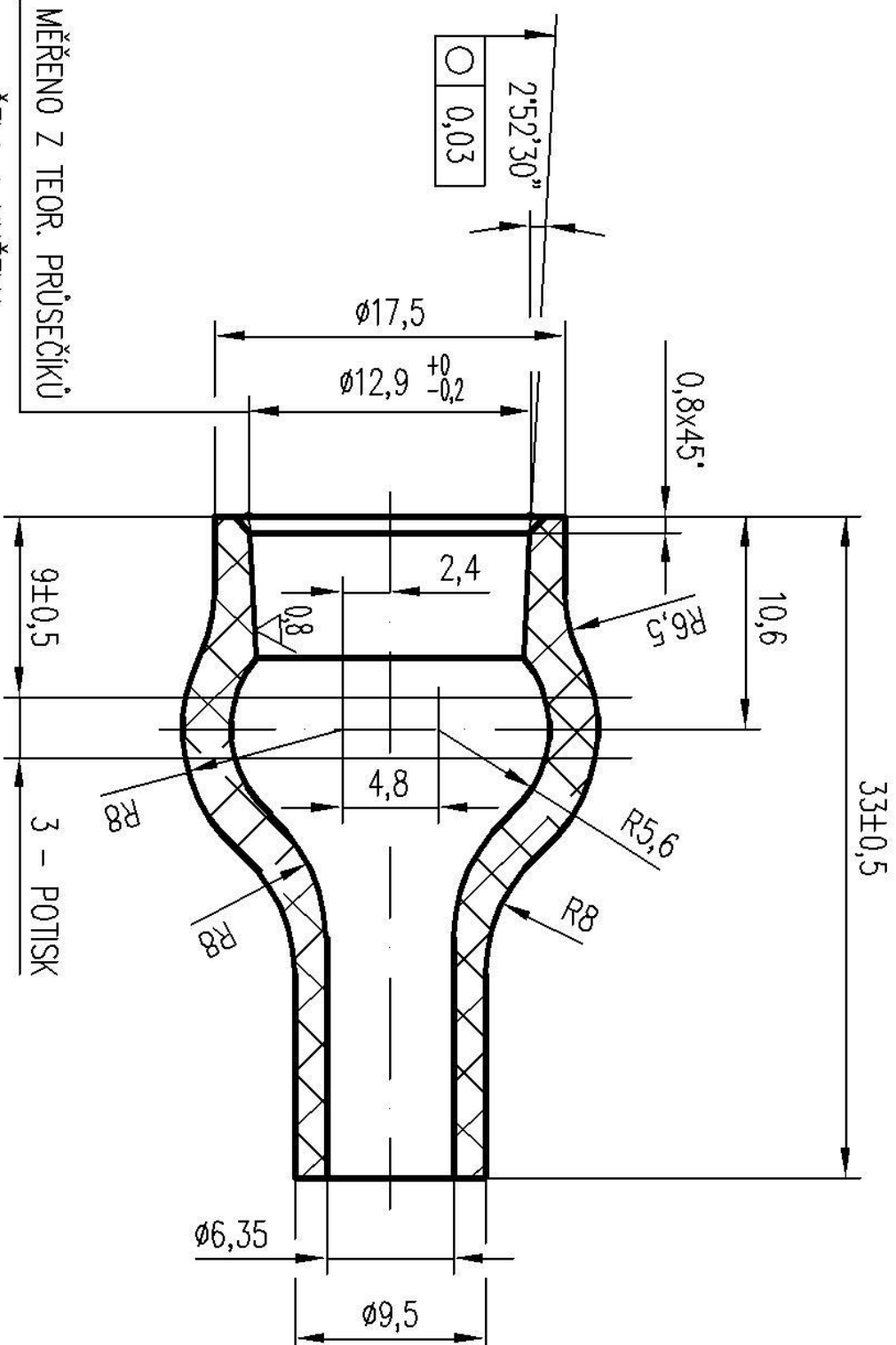


130-01



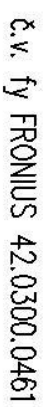
č.v. fy FRONIUS 42.0300.0816

130-11



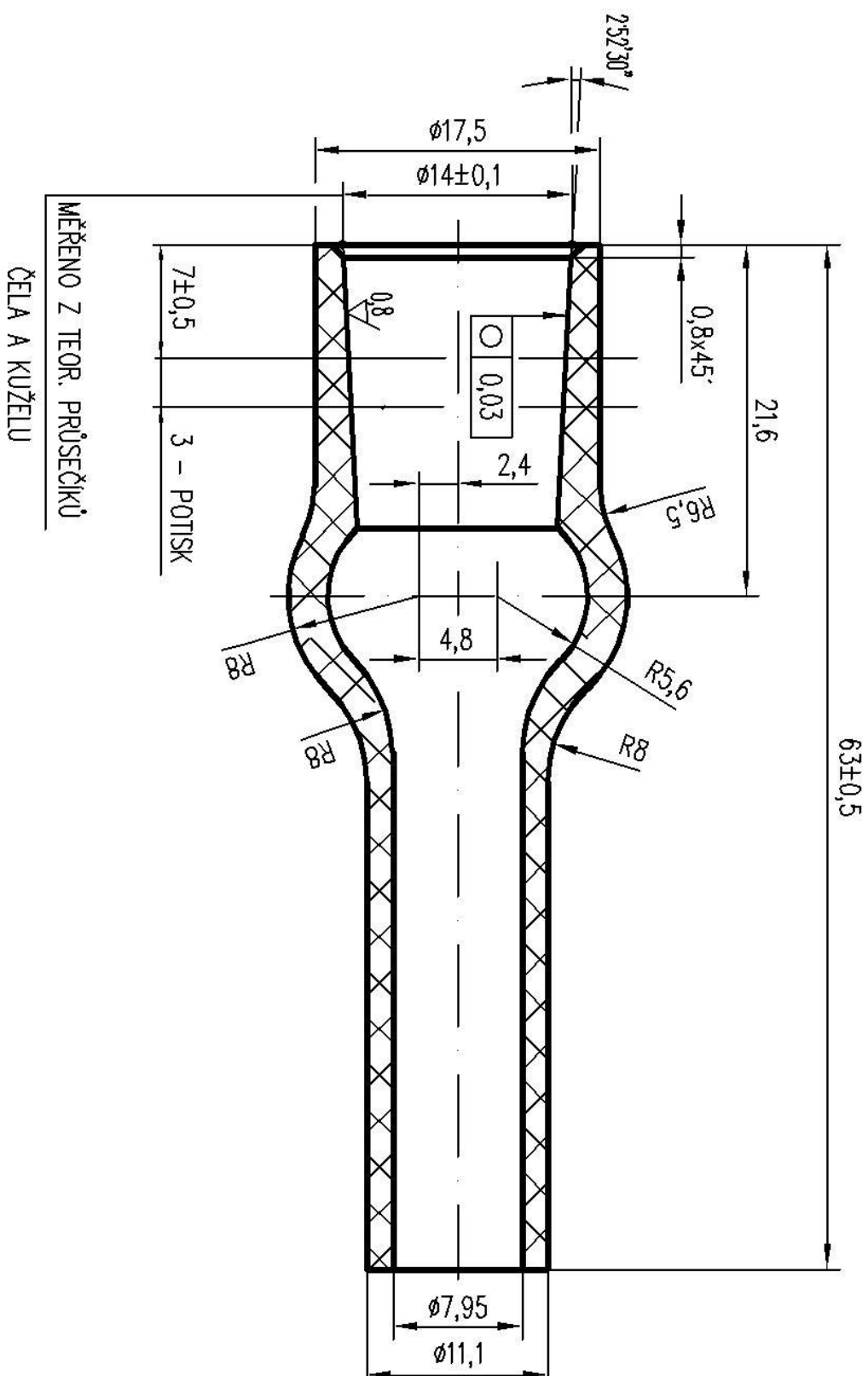
č.v. fy FRONIUS 42.0300.0820

www.brisk.eu
BRISK®
CZECH REPUBLIC



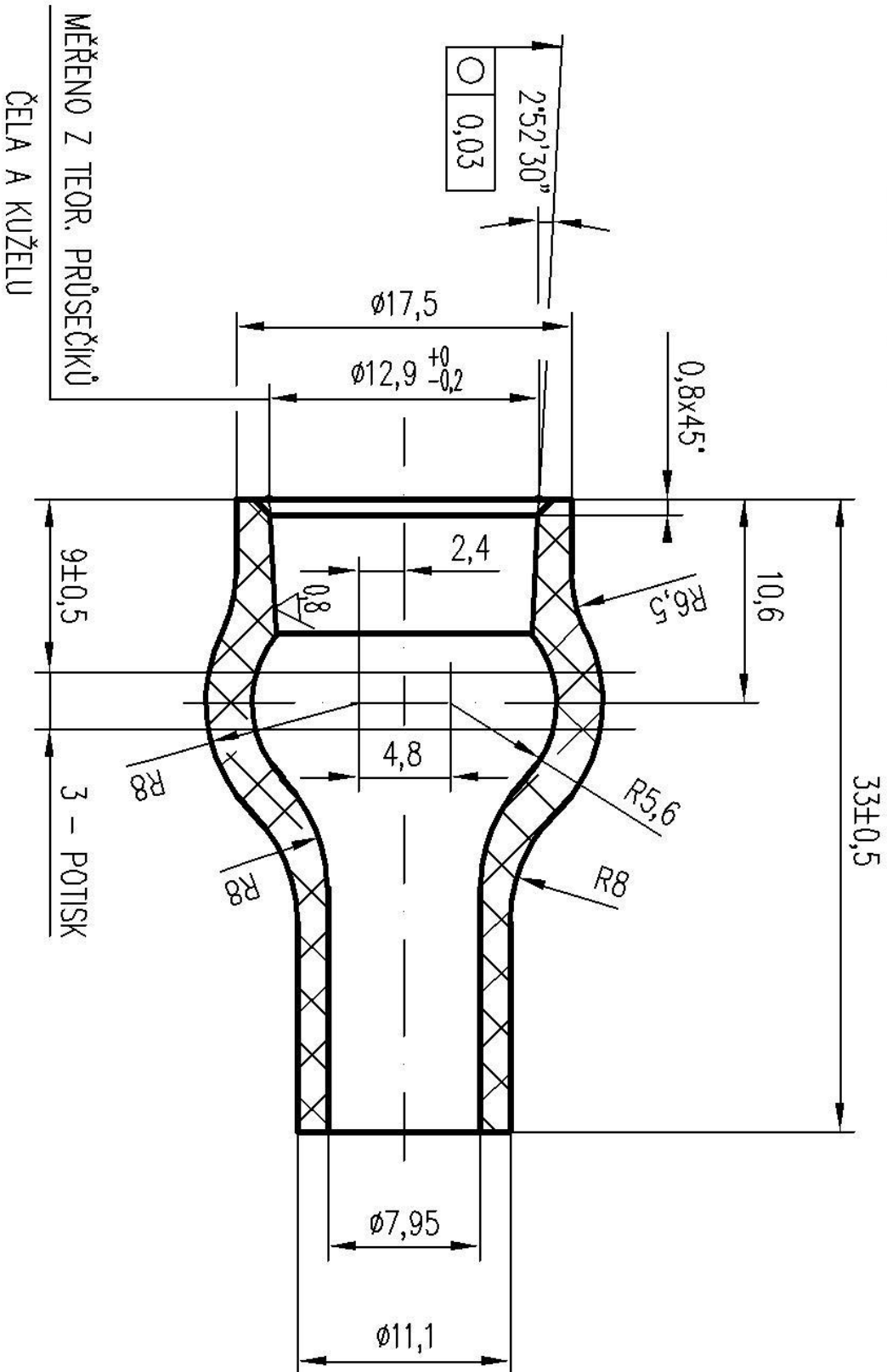
č.v. fy FRONIUS 42.0300.0817

131-07



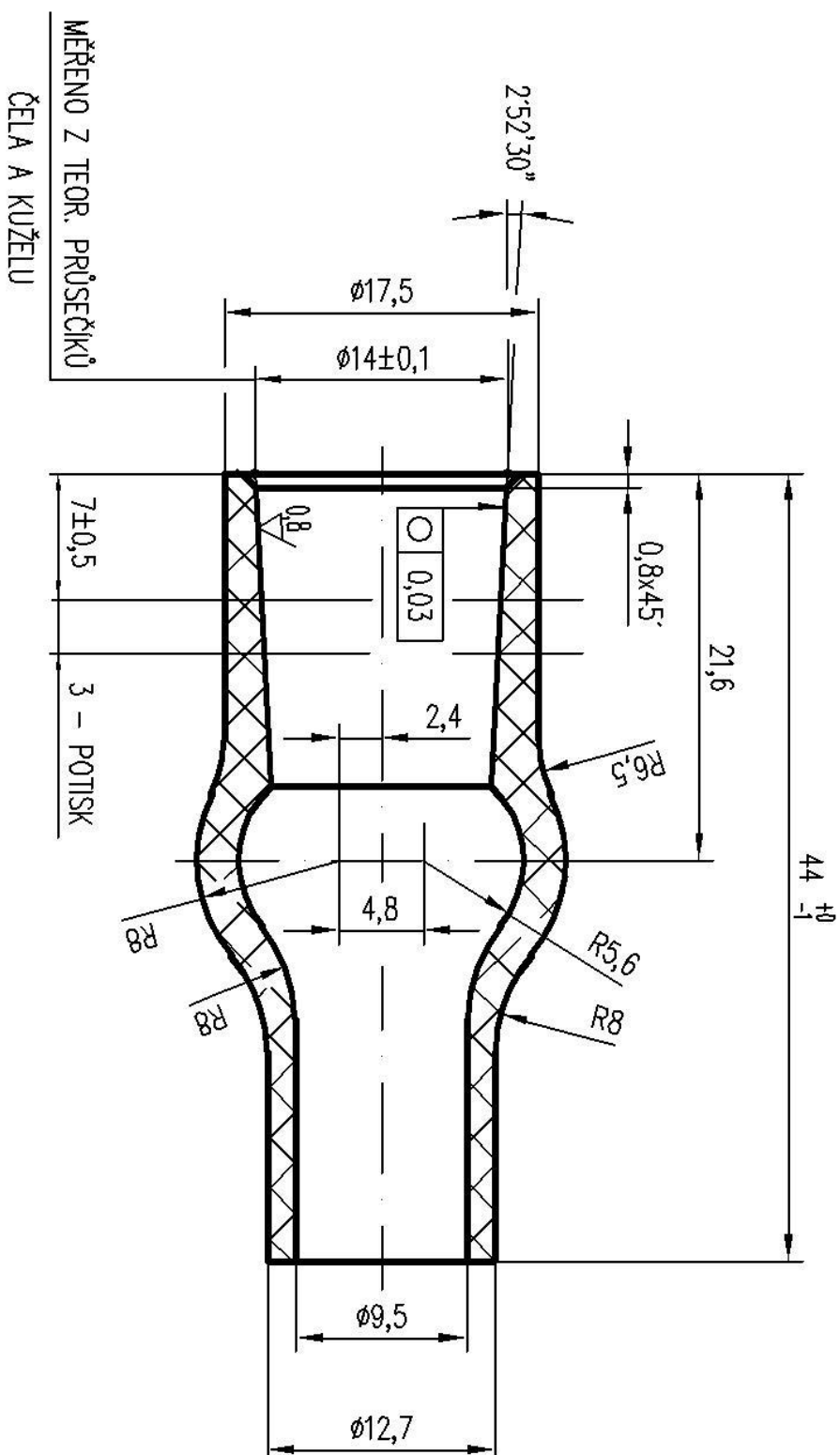
č.v. ty FRONIUS 42.0300.1121

131-11



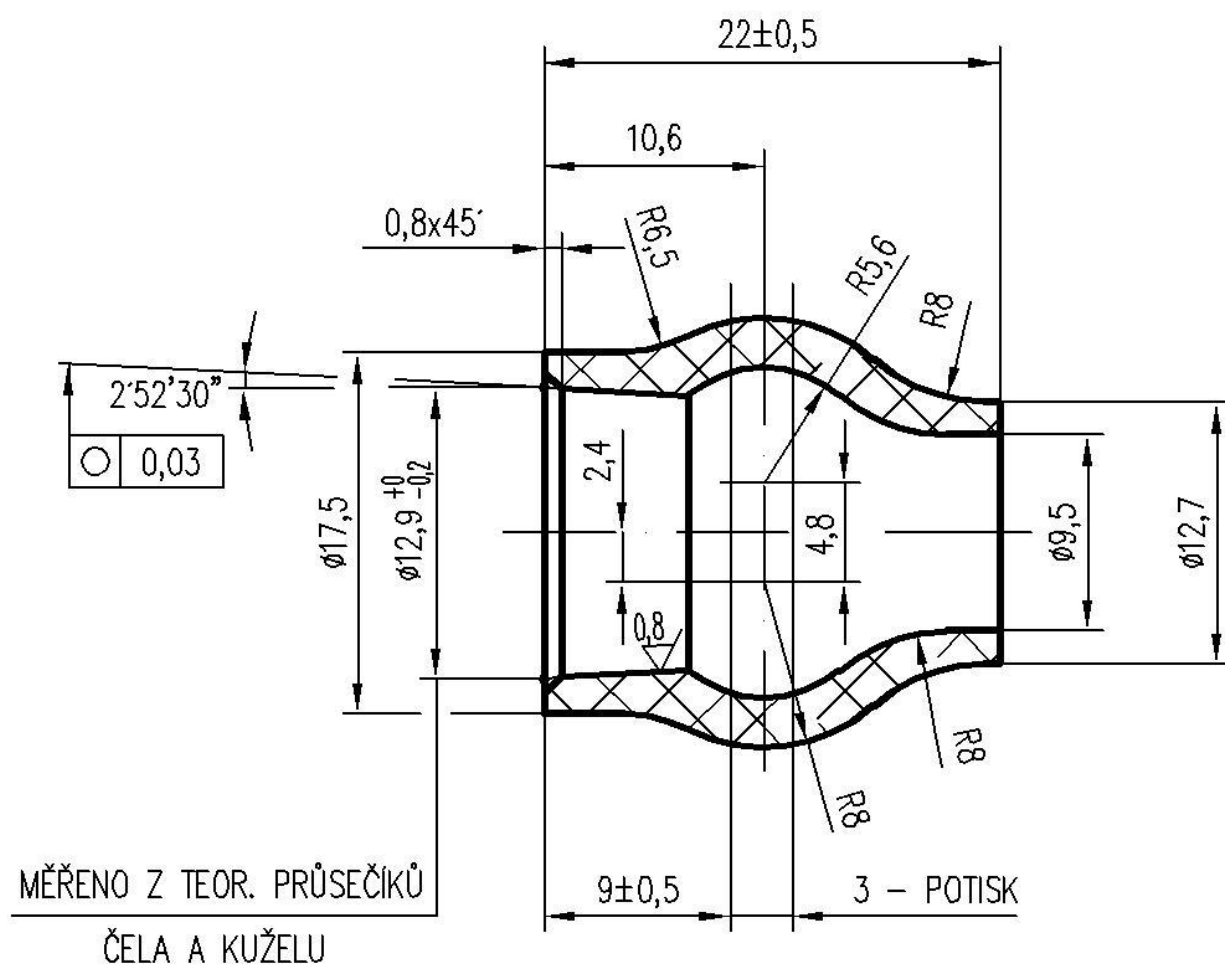
č.v. fy FRONIUS 42.0300.0821

132-00



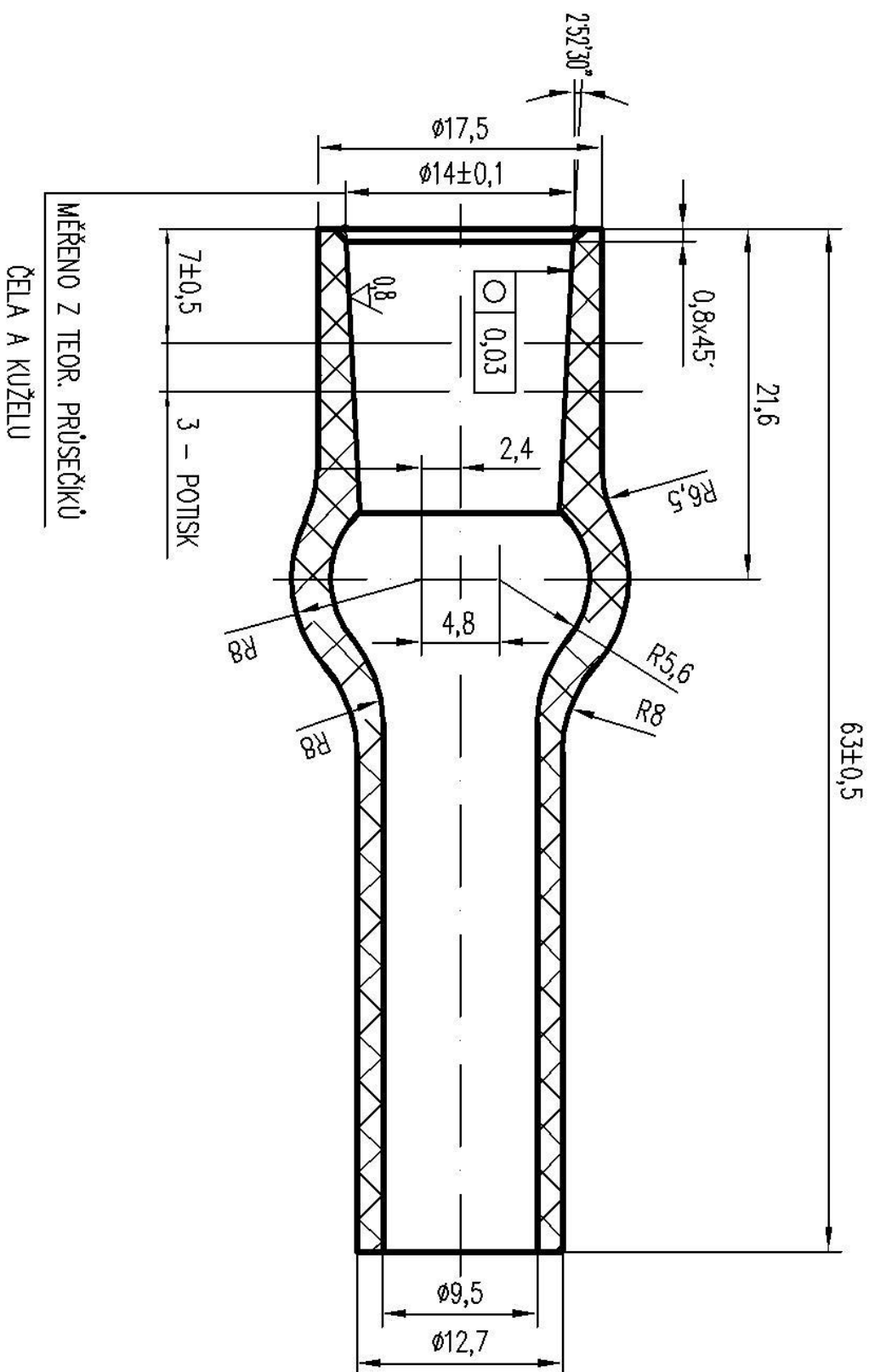
č.v. fy FRONIUS 42.0300.0462

132-01



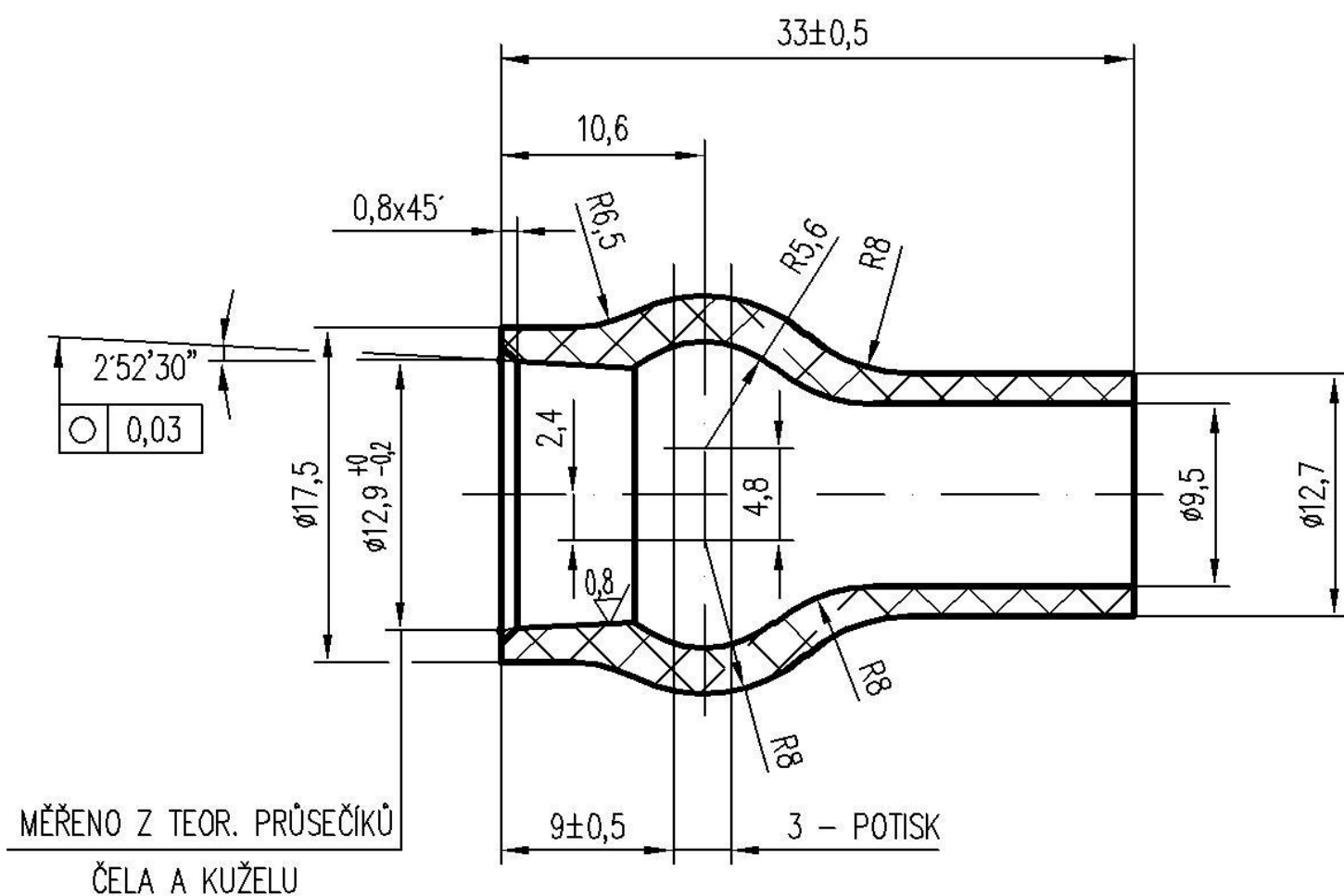
č.v. fy FRONIUS 42.0300.0818

132-07



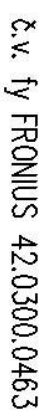
č.v. fy FRONIUS 42.0300.1122

132-11

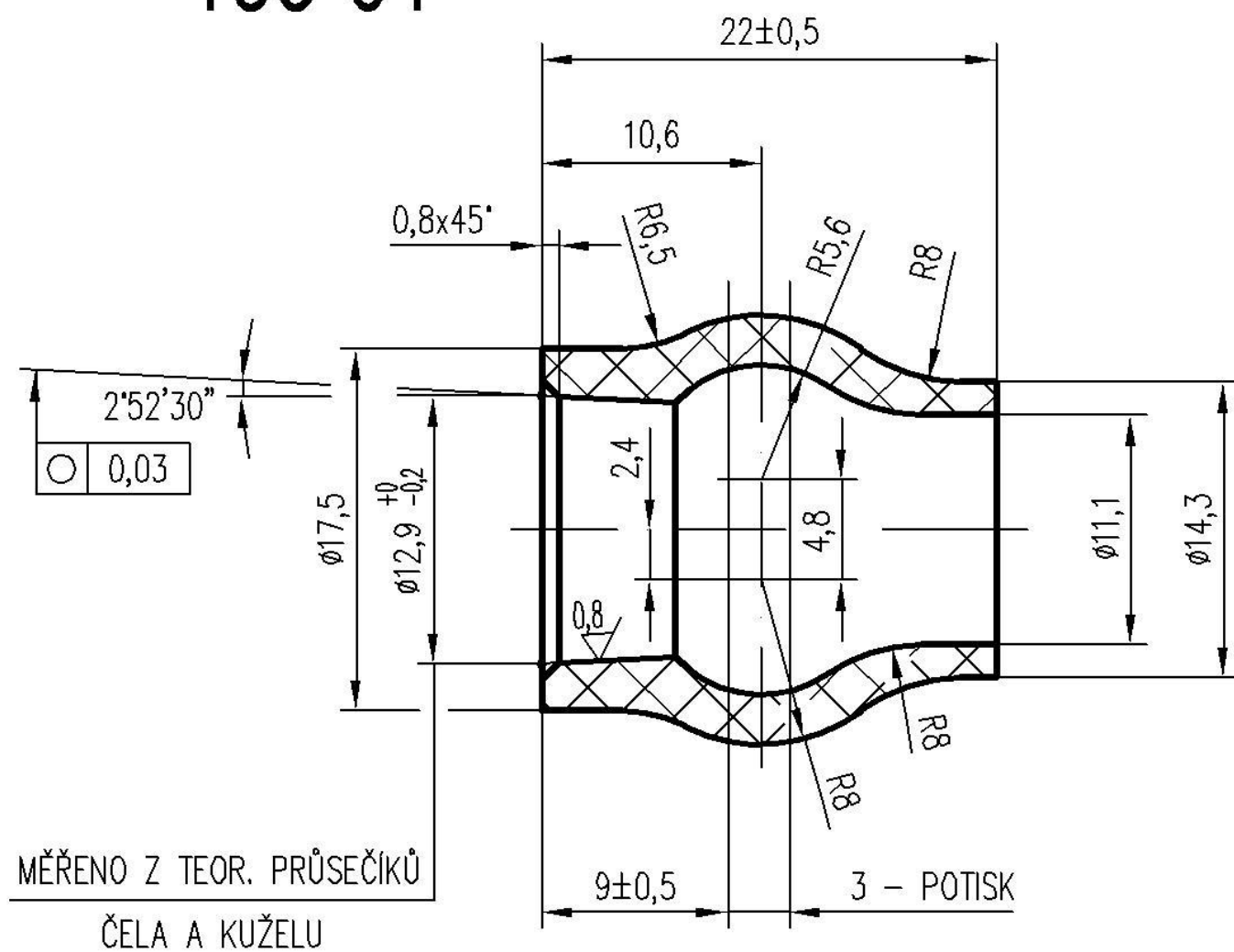


č.v. fy FRONIUS 42.0300.0822

www.BRISK.eu
BRISK®
CZECH REPUBLIC

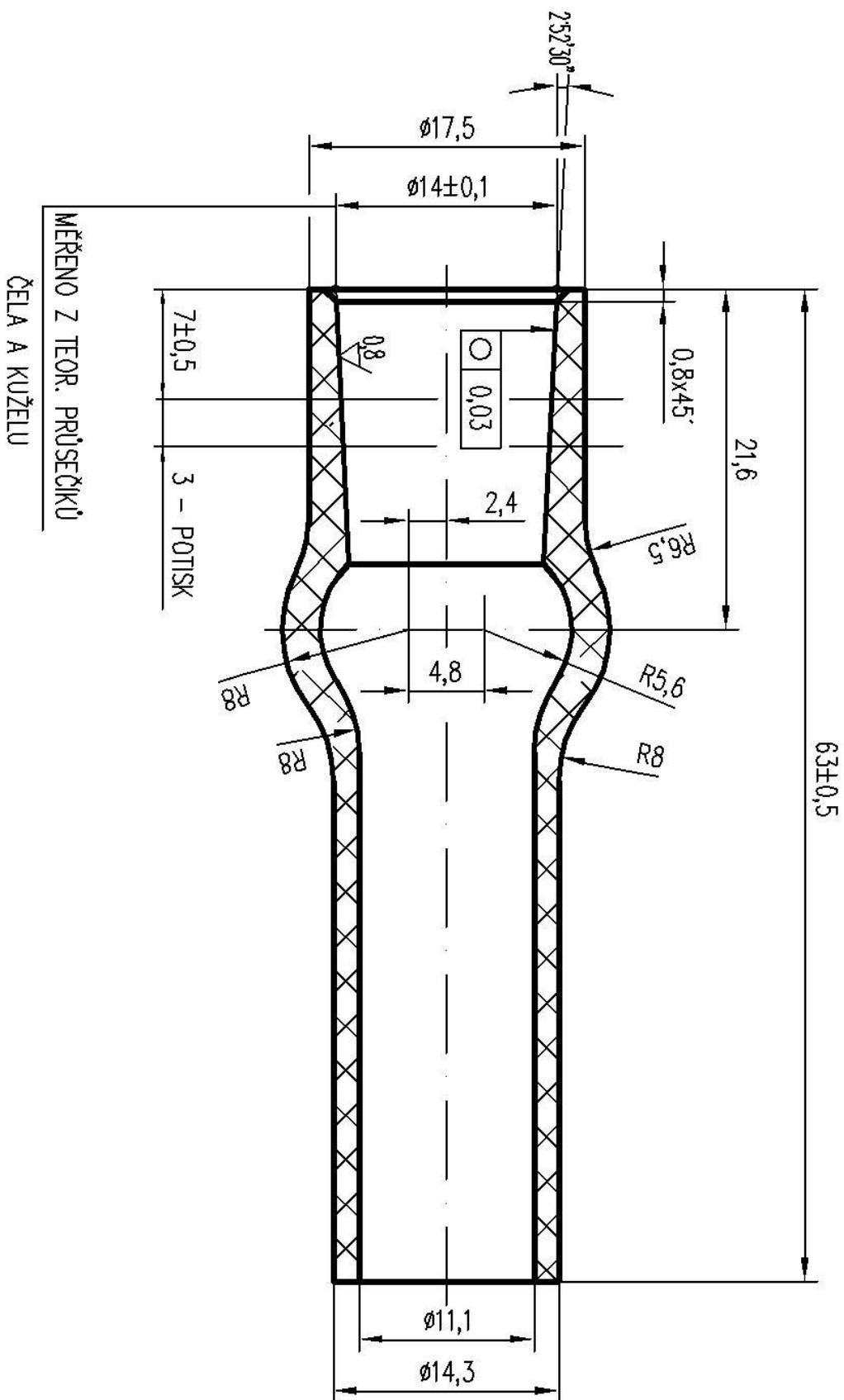


133-01



č.v. fy FRONIUS 42.0300.0819

133-07

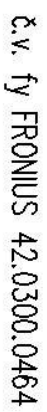


č.v. fy FRONIUS 42.0300.1123

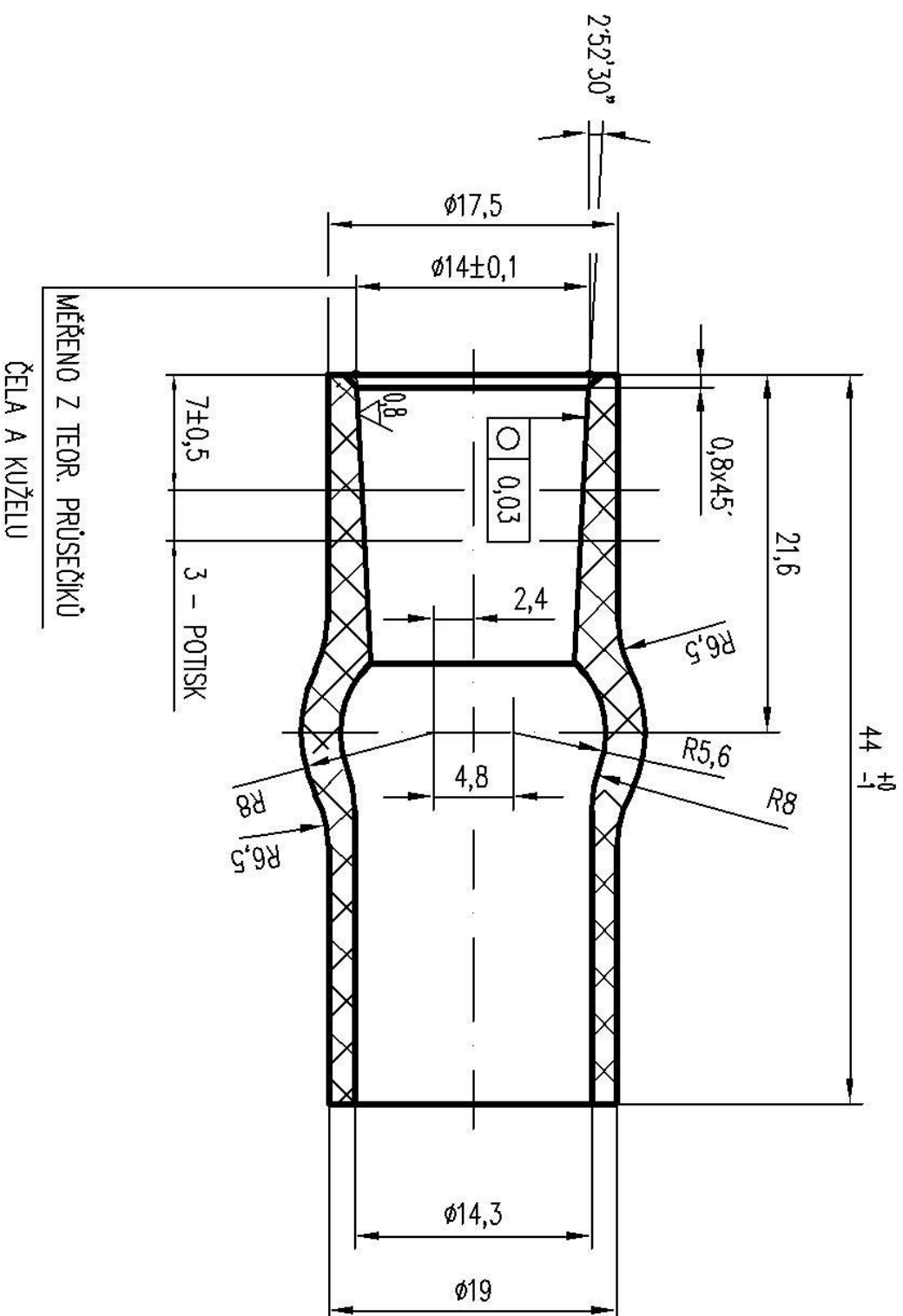


č.v. fy FRONIUS 42.0300.0823

www.BRISKEU
BRISK
CZECH REPUBLIC



135-00



č.v. fy FRONIUS 42.0300.0465

Technical drawing of a mechanical part, likely a sleeve or bush, showing dimensions and tolerances.

Dimensions and Tolerances:

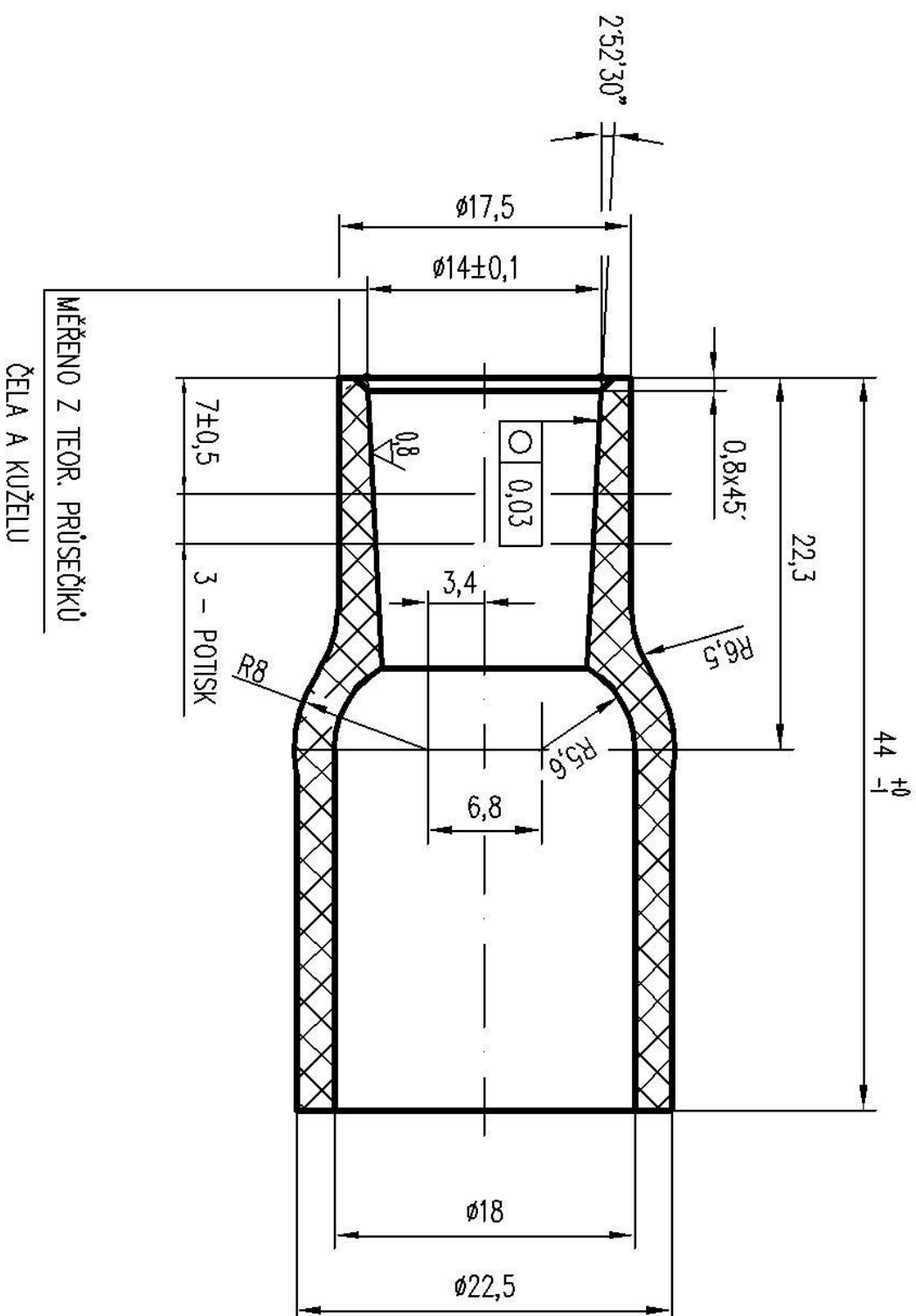
- Overall length: 44^{+0}_{-1}
- Flange diameter: $\varnothing 20,5$
- Inner bore diameter: $\varnothing 16$
- Flange thickness: $7 \pm 0,5$
- Inner bore length: $4,8$
- Transition radius: $R5,6$
- Inner bore radius: $R8$
- Surface texture: $0,8 \times 45^\circ$
- Surface finish symbol: $\text{Circular texture symbol with } 0,03$
- Surface texture: $0,8$
- Surface texture: $2,4$
- Surface texture: $0,8 \times 45^\circ$
- Surface texture: $R6,5$
- Surface texture: $R5,6$
- Surface texture: $R8$
- Surface texture: $3 - \text{POTISK}$

Notes:

- MĚŘENO Z TEOR. PRŮSEČÍKŮ
- ČELA A KUŽELU

č.v. fy FRONIUS 42.0300.0466

137-00

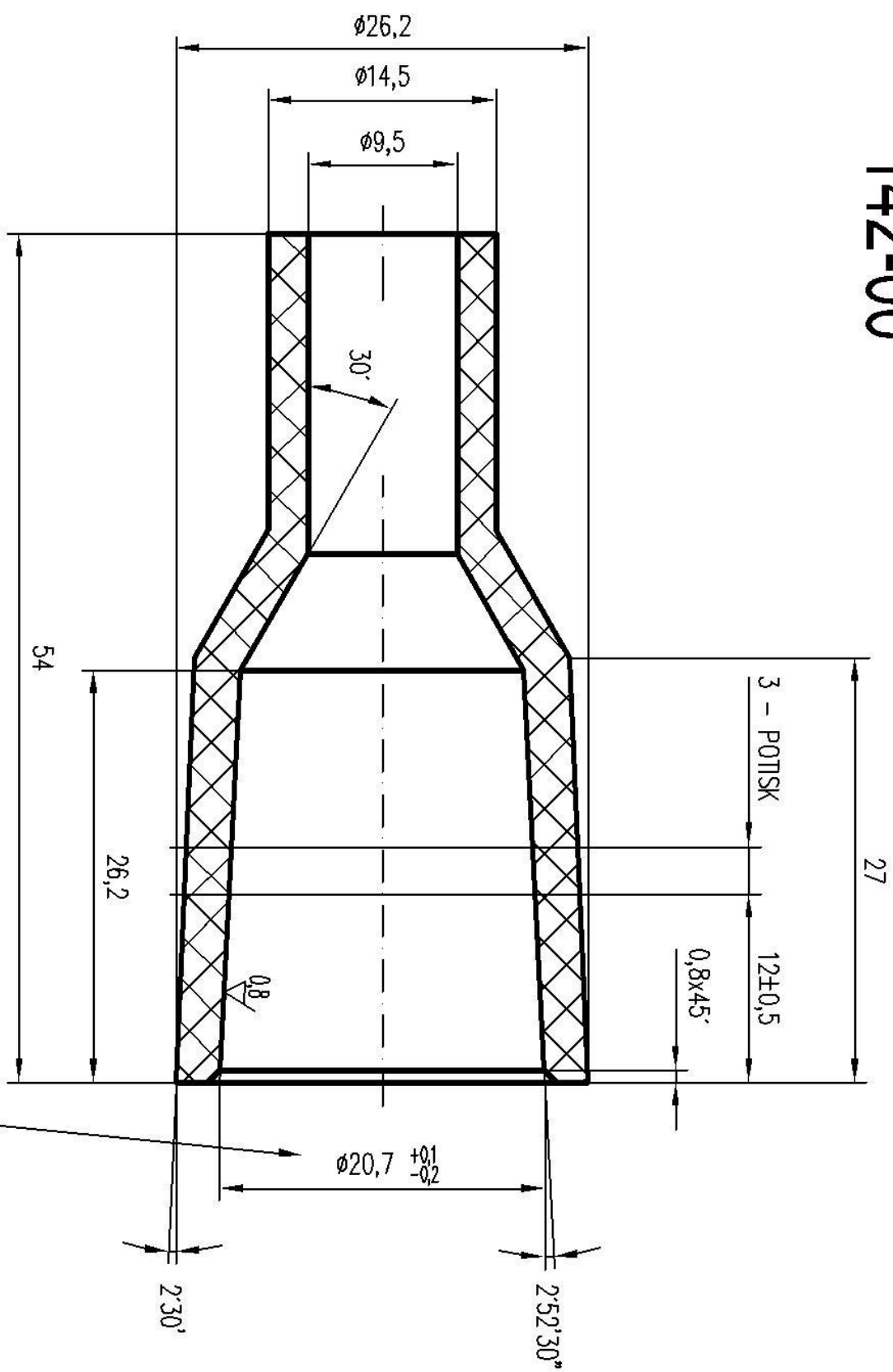


č.v. fy FRONIUS 42.0300.0467

www.brisk.eu
BRISK®
CZECH REPUBLIC



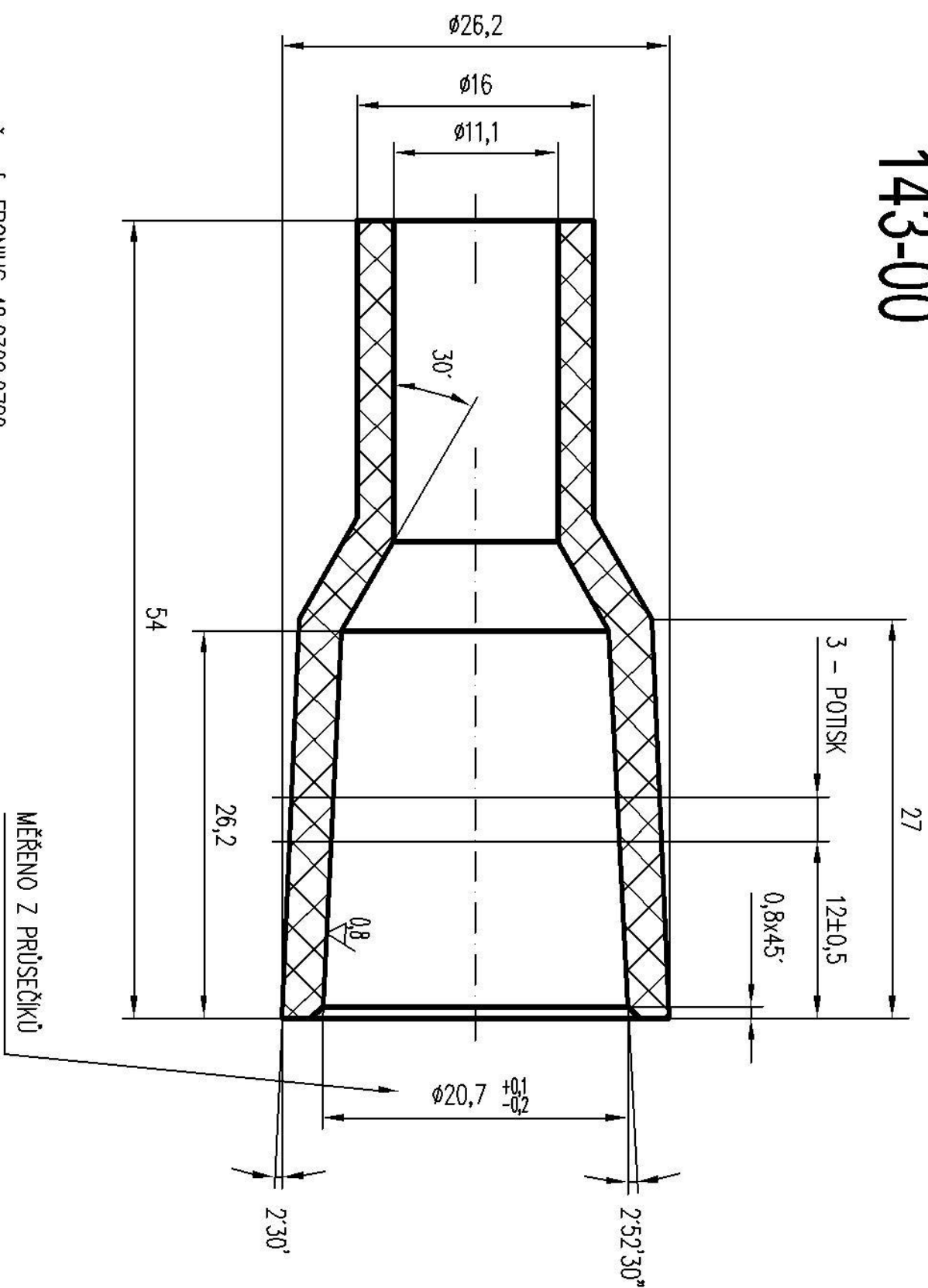
142-00



MĚŘENO Z PRŮSEČÍKŮ

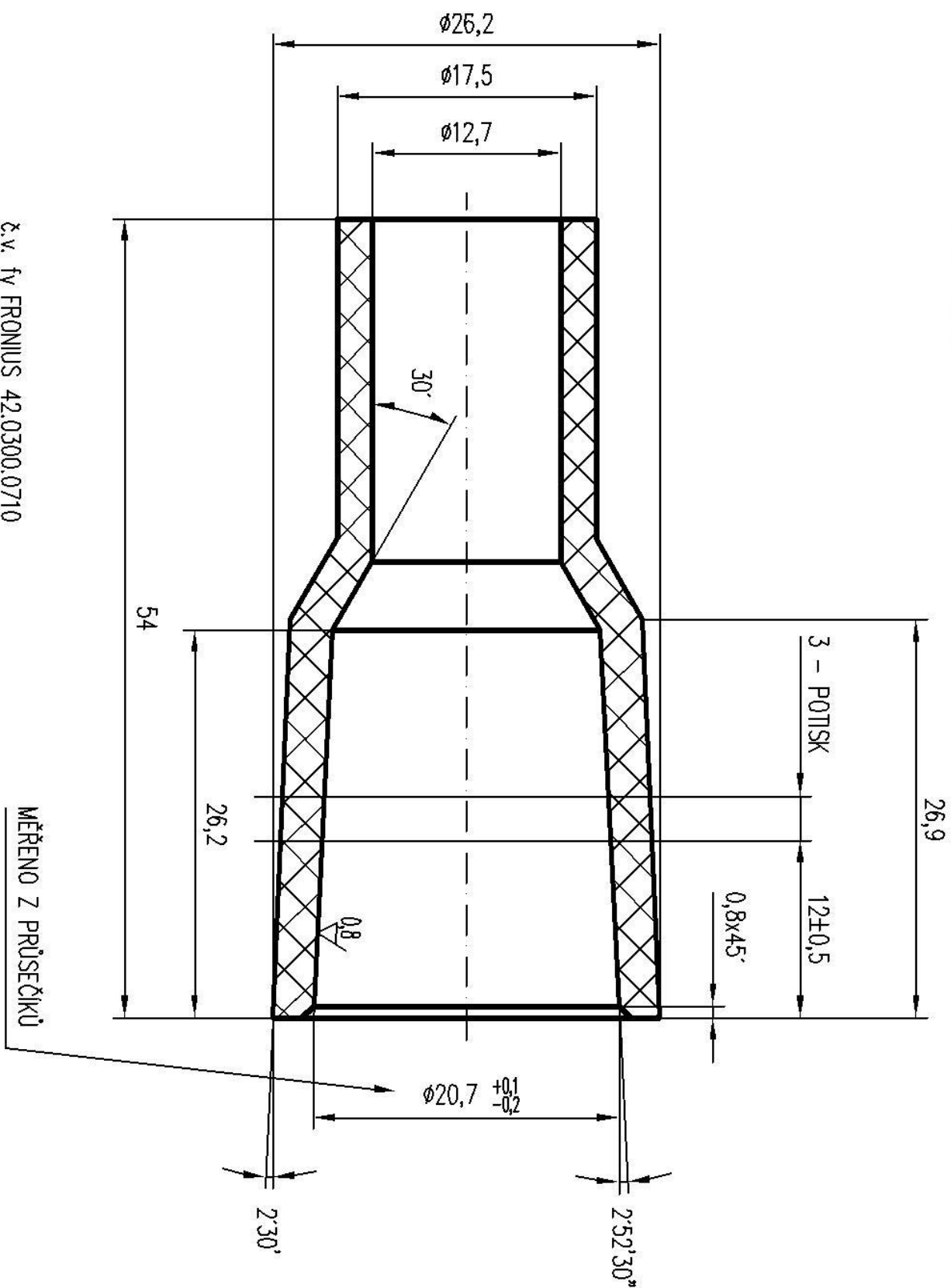
č.v. fy FRONIUS 42.0300.0708

143-00



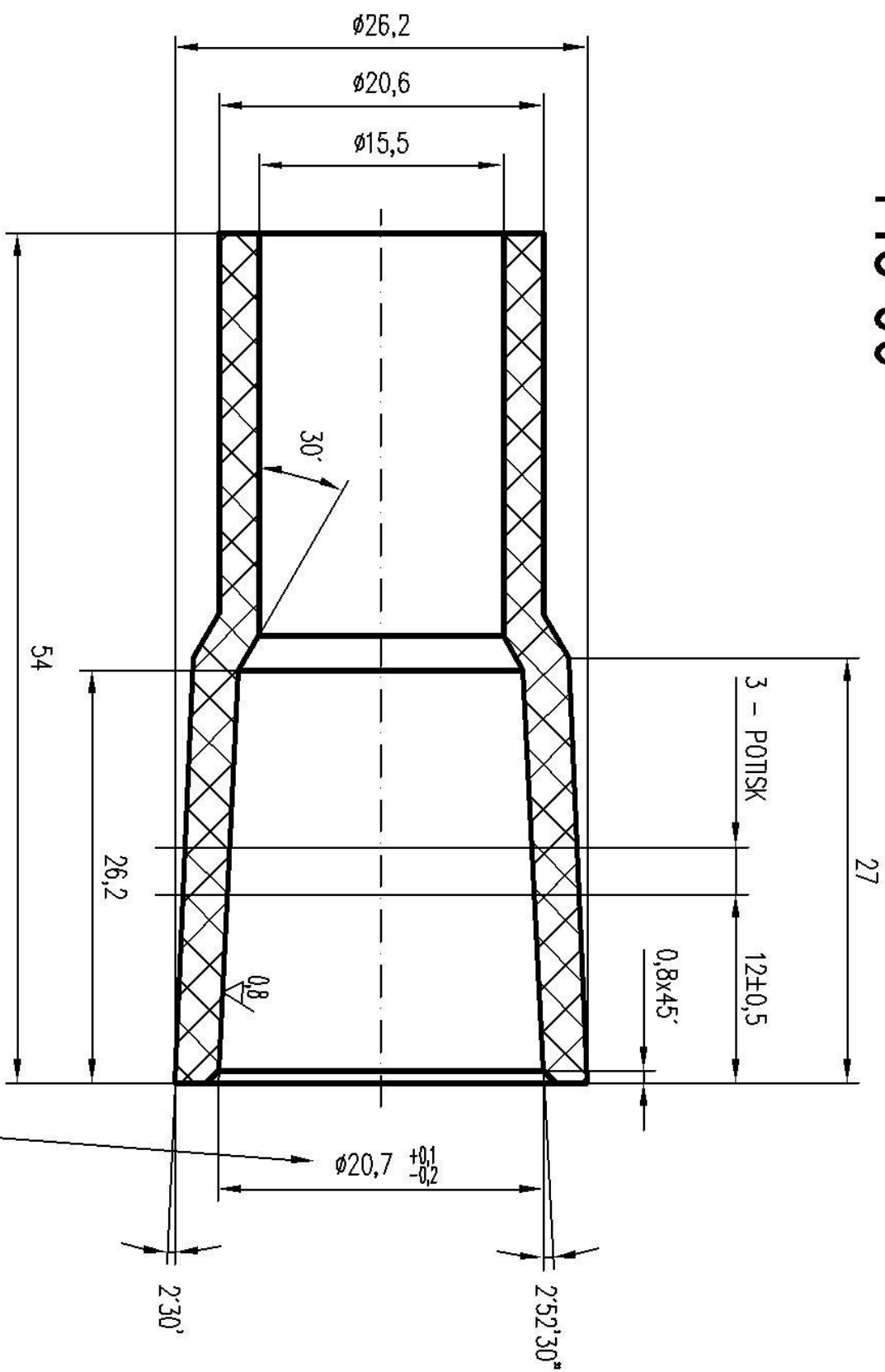
č.v. fy FRONIUS 42.0300.0709

144-00



č.v. fy FRONIUS 42.0300.0710

145-00

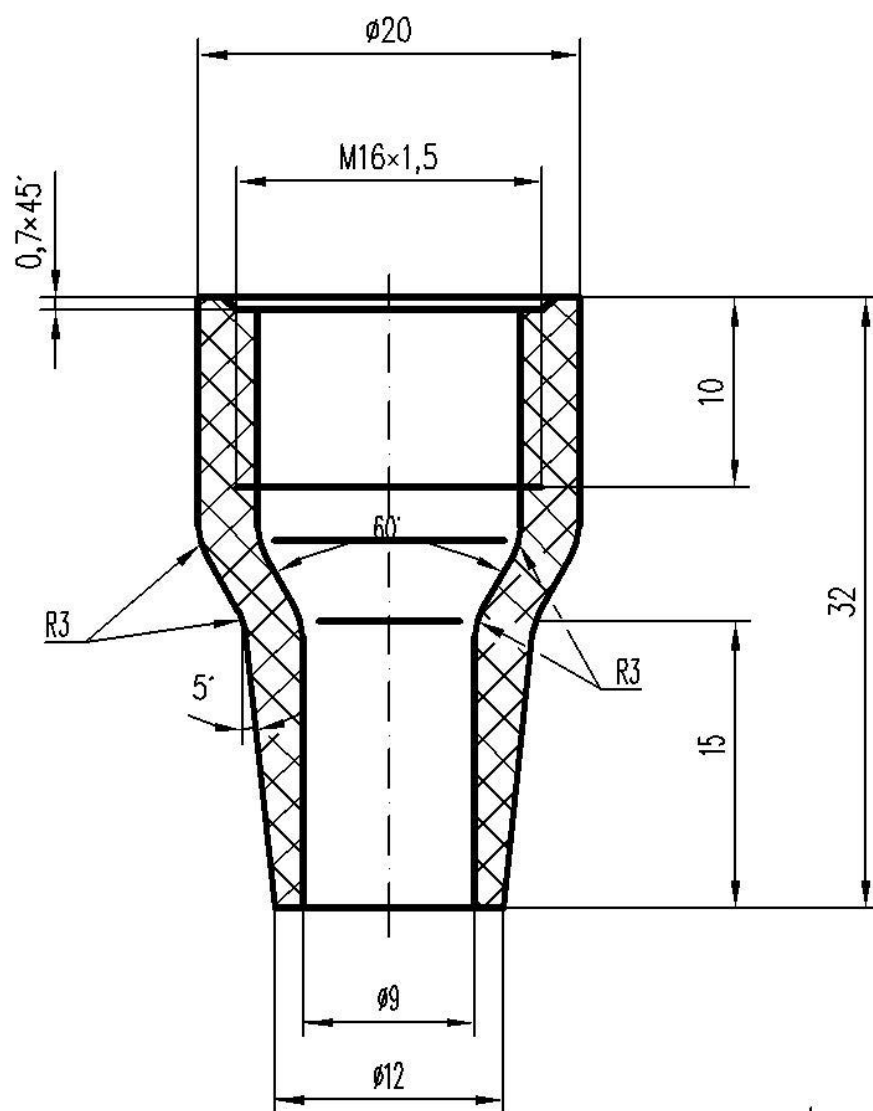


MĚŘENO Z PRŮSEČÍKŮ

č.v. fy FRONIUS 42.0300.0711

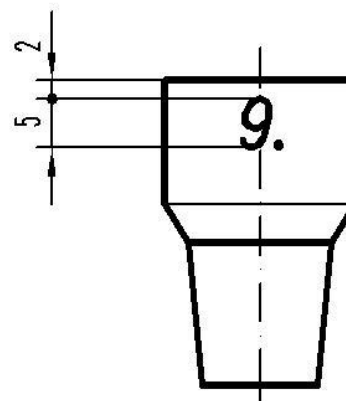


1281.47



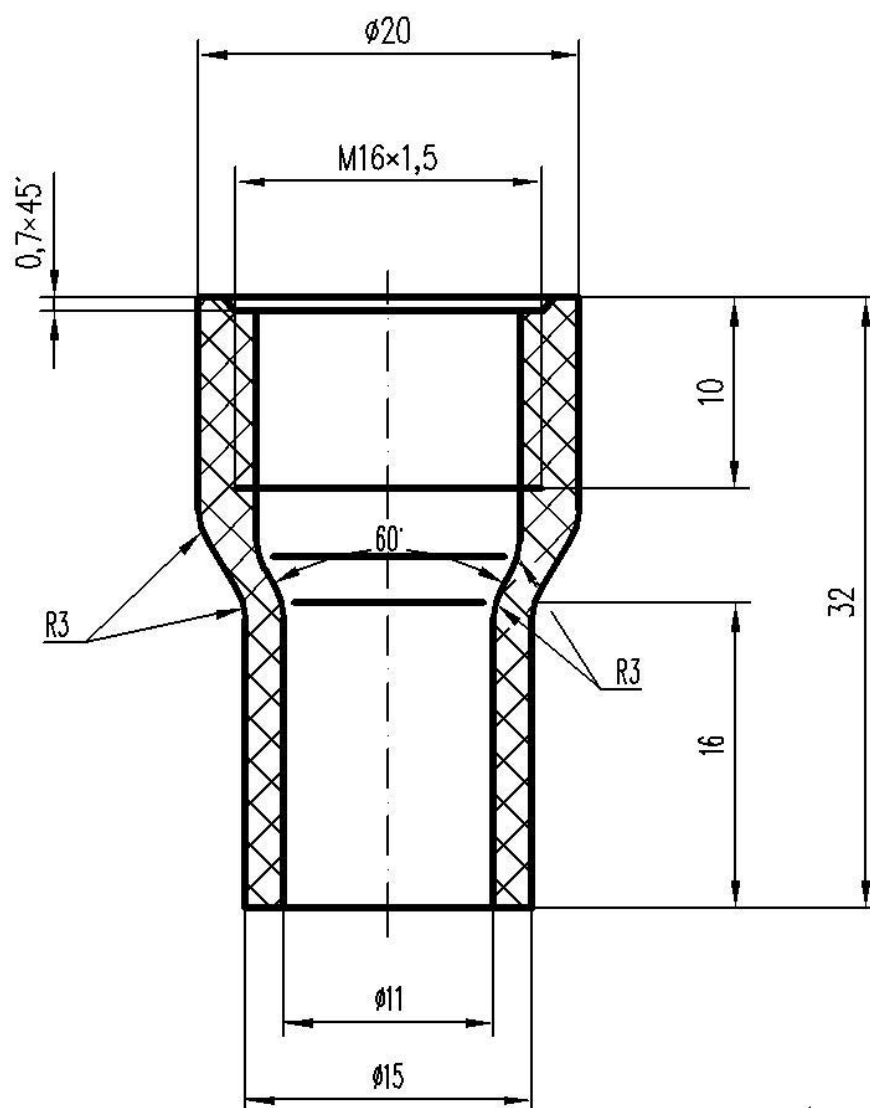
POVOLENÉ VADY:
 DLE ETALONU č.415-9990.45

M 1:1

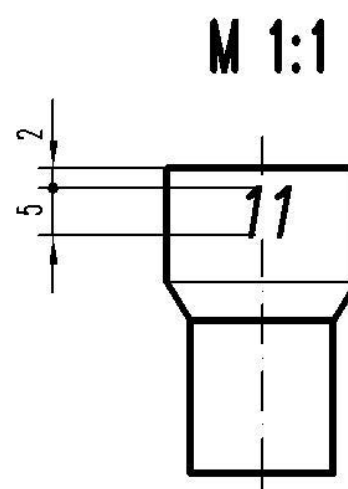




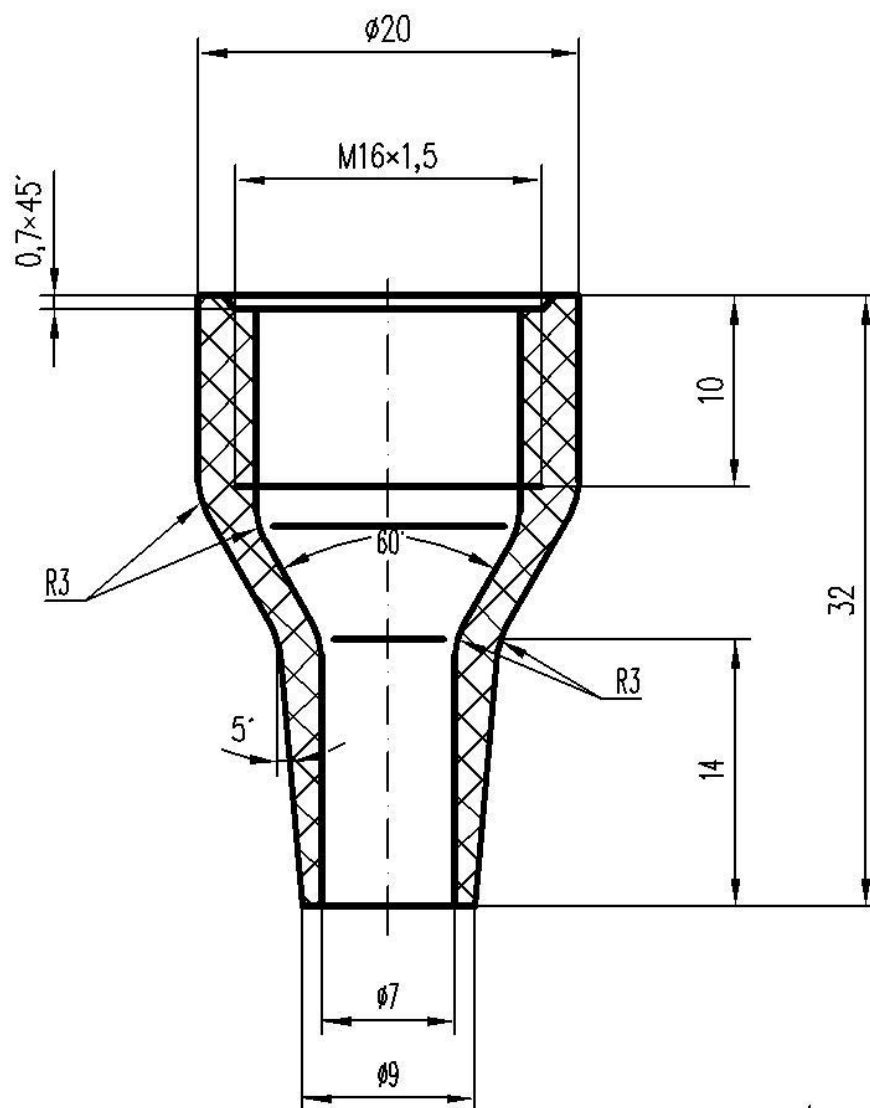
1284.47



POVOLENÉ VADY:
 DLE ETALONU č.415-9990.45

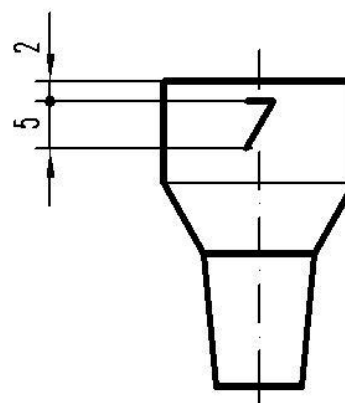


1285.47



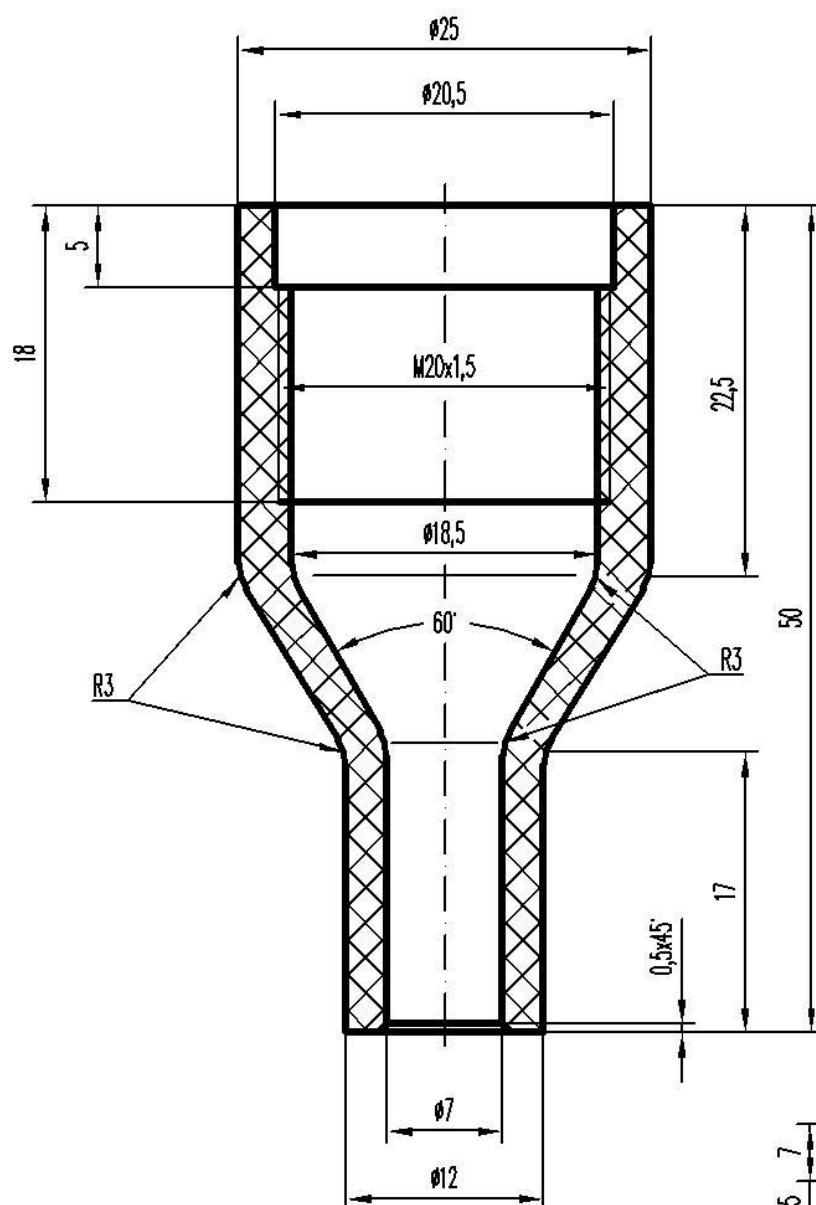
POVOLENÉ VADY:
 DLE ETALONU č.415-9990.45

M 1:1

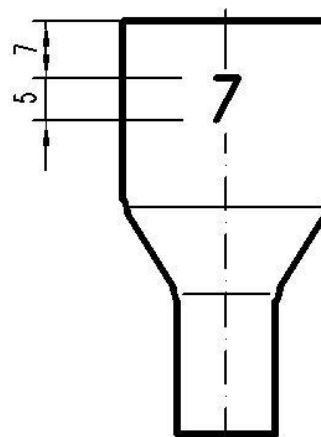




1291.47



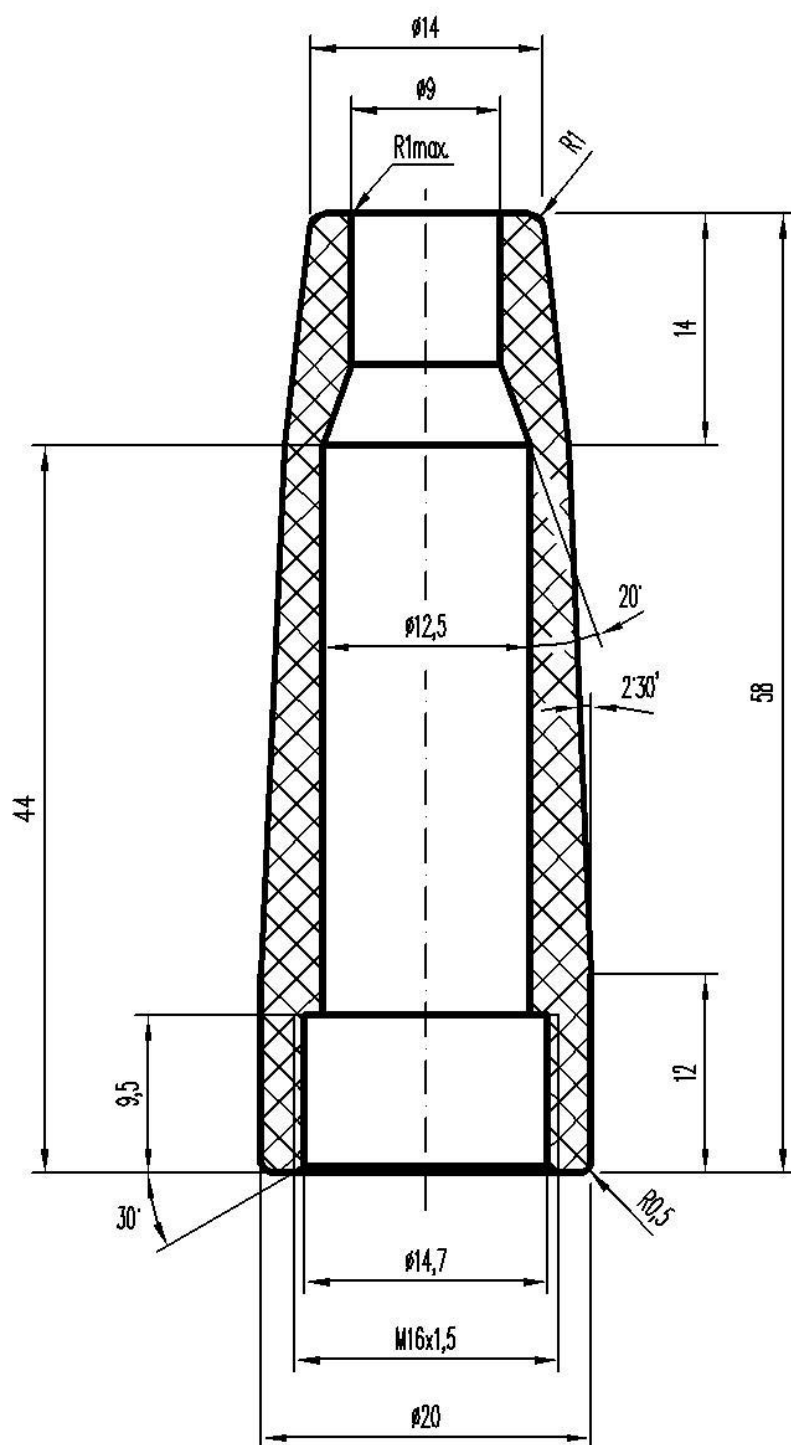
M 1:1



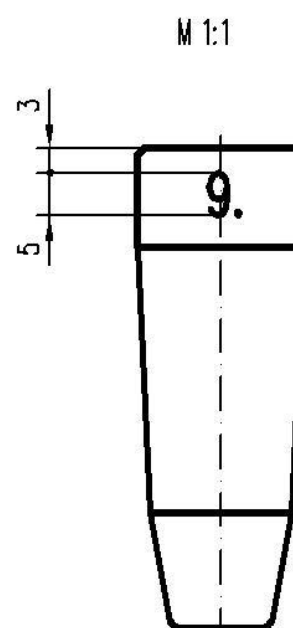
POVOLENÉ VADY:
 DLE ETALONU č.415-9990.45



1293.47

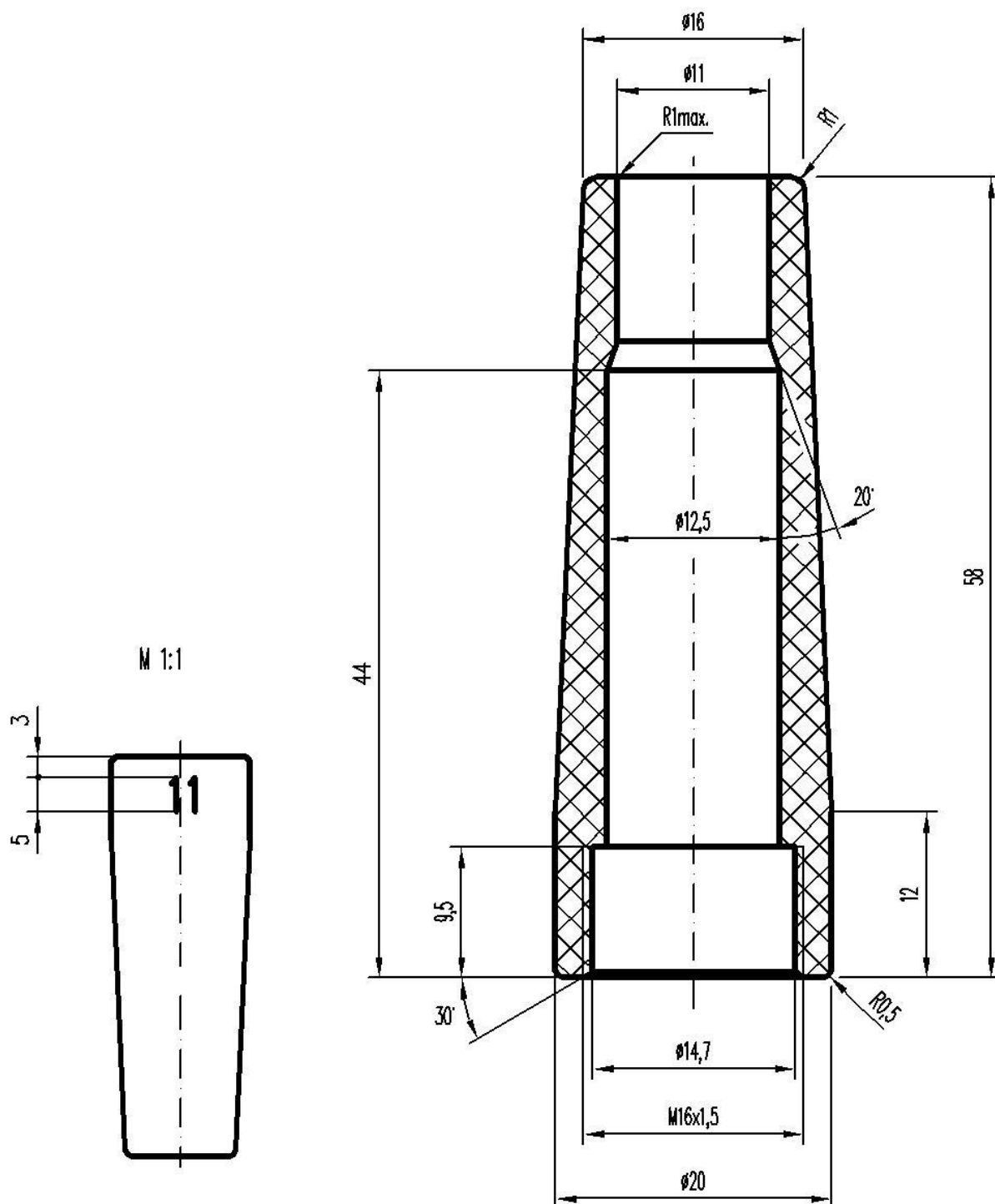


DOVOLENÉ VADY:
 DLE ETALONU č.415-9990.45





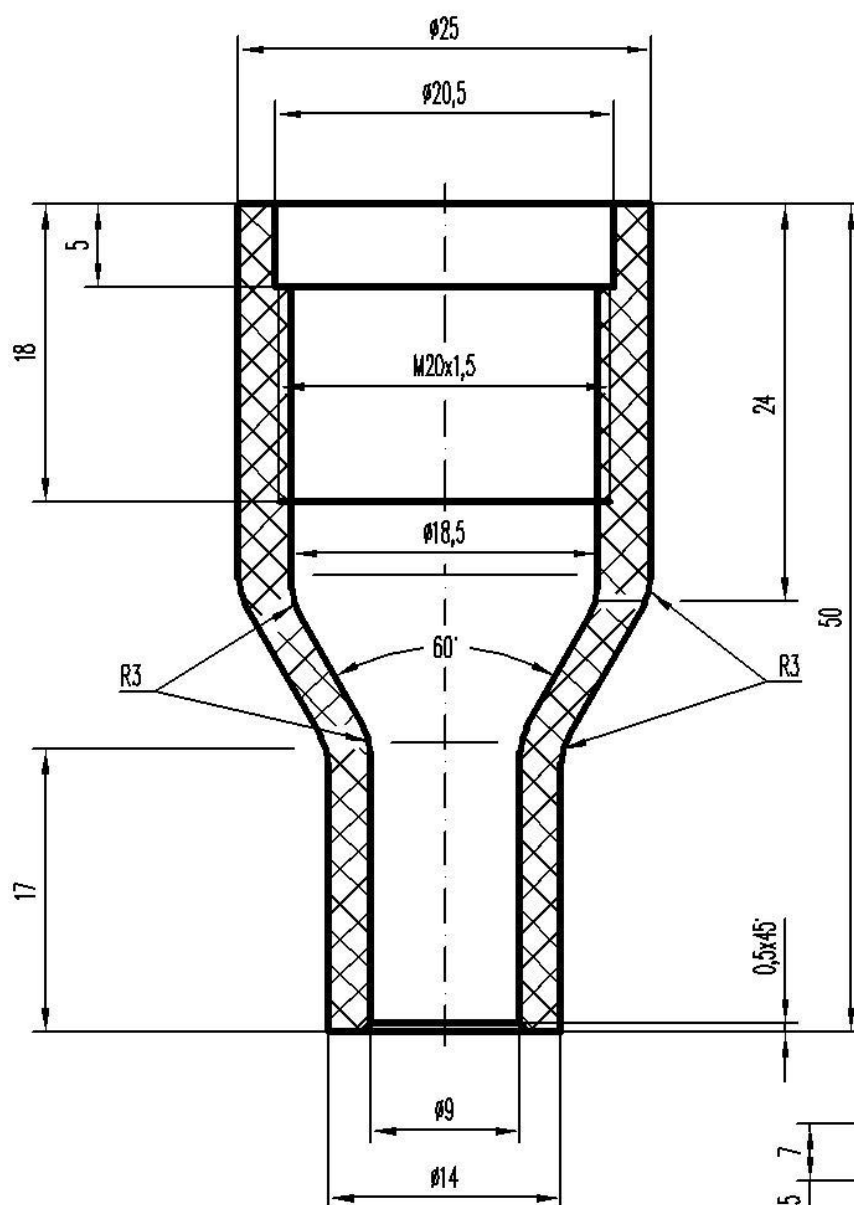
1295.47



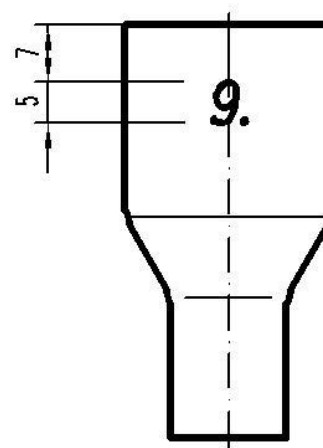
DOVOLENÉ VADY:
 DLE ETALONU č.415-9990.45



1296.47



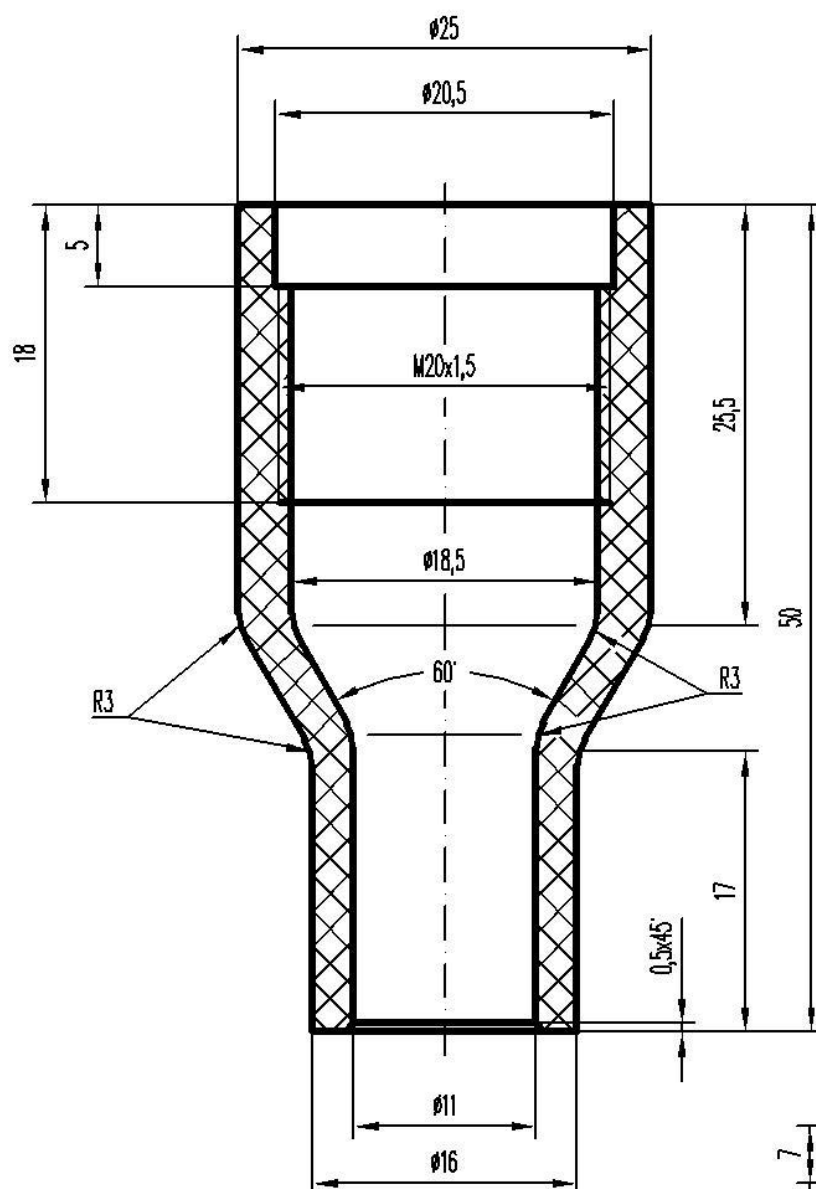
M 1:1



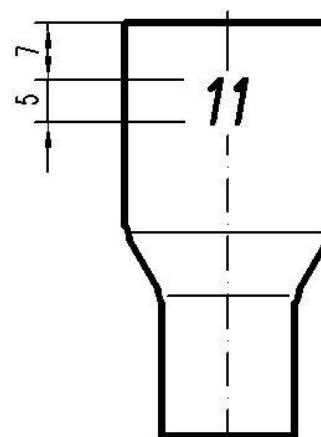
DOVOLENÉ VADY:
 DLE ETALONU č.415-9990.45



1297.47



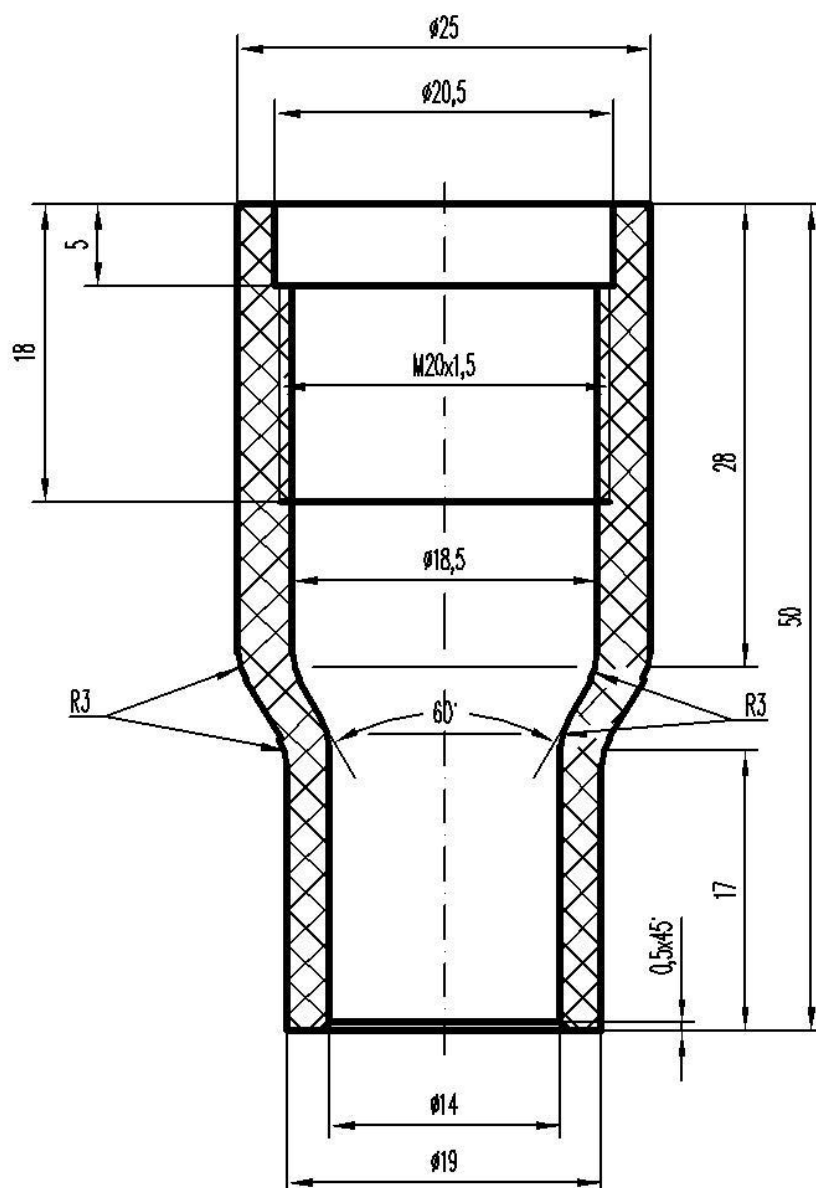
M 1:1



DOVOLENÉ VADY:
 DLE ETALONU č. 415-9990.45

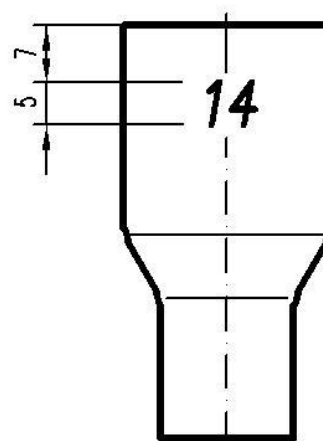


1298.47

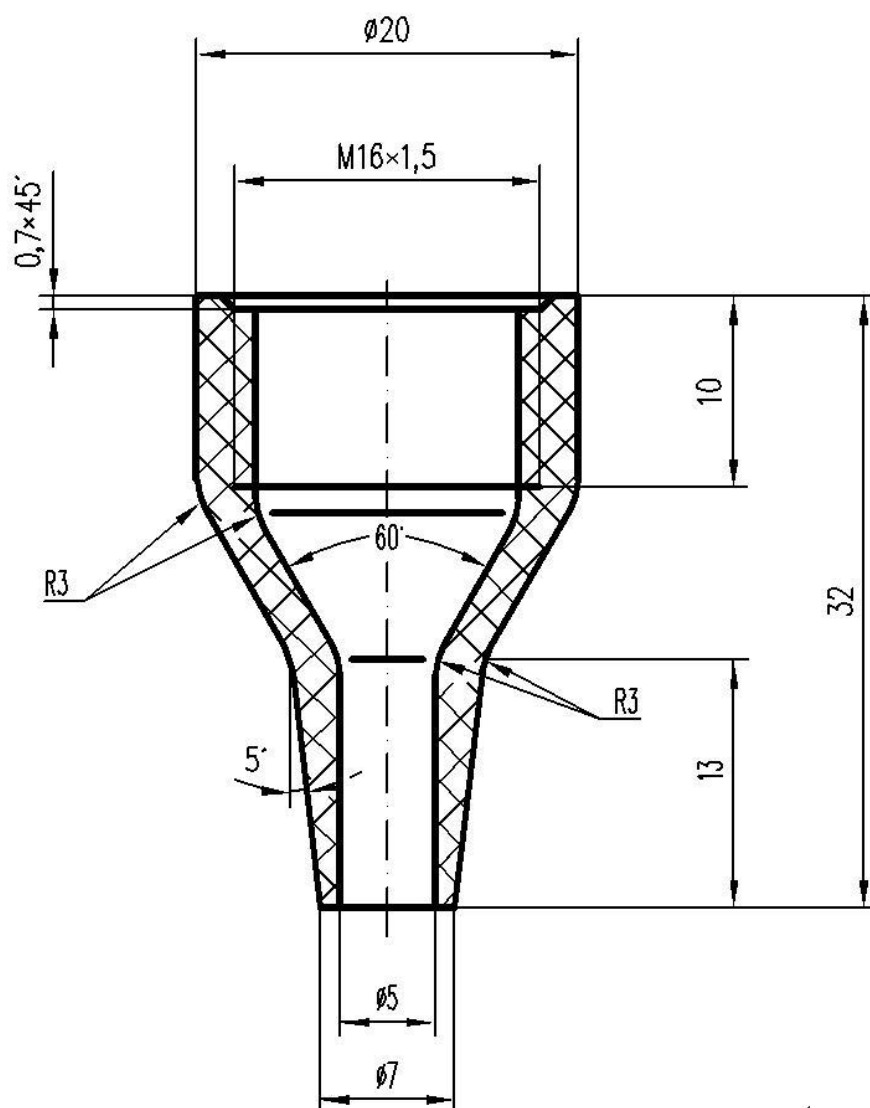


DOVOLENÉ VADY:
 DLE ETALONU č.415-9990.45

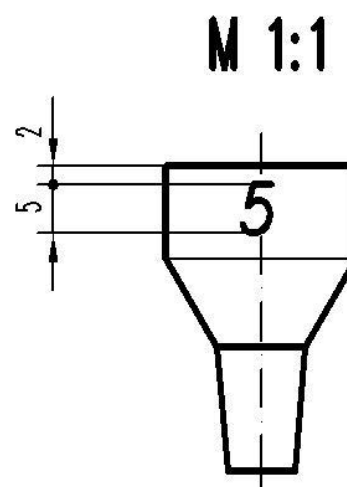
M 1:1



1377.47

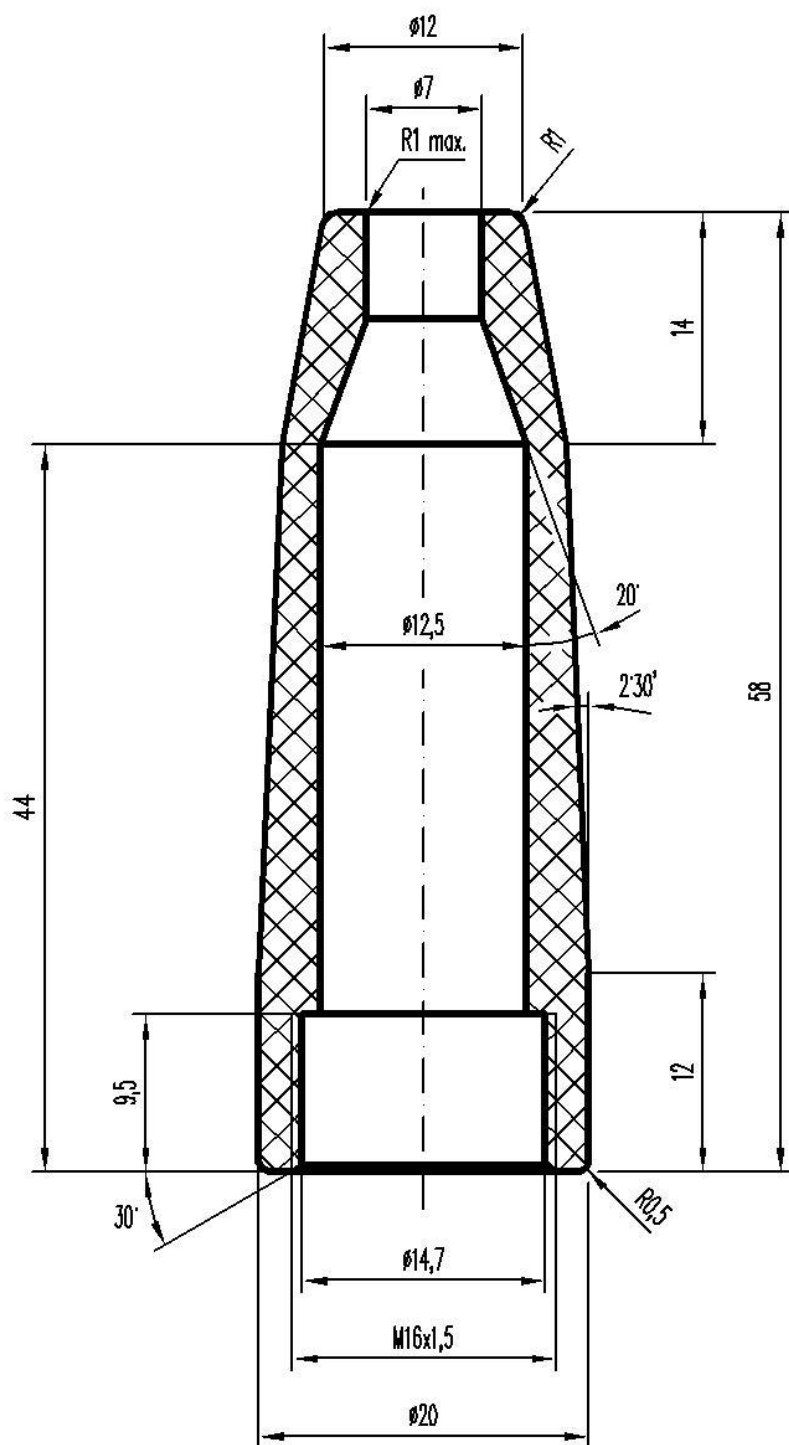


DOVOLENÉ VADY:
 DLE ETALONU č.415-9990.45

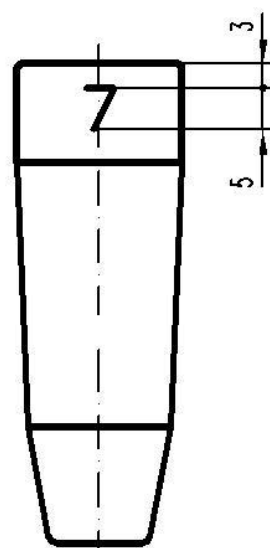




1382.47



M 1:1



DOVOLENÉ VADY:
 DLE ETALONU č.415-9990.45